

A few specific **case studies** will illustrate best practices in play

Design principles can give us a shared language to talk about our aspirations for our building and public spaces. But the best buildings are the result of a thoughtful process that engages a broad range of people. The following case studies highlight three successful processes that led to exemplary results.

These **case studies** represent pathways to design excellence

The Field School, Weston
designed by Jonathan Levi Architects



The Bruce C. Bolling Municipal Building, Boston
designed by Mecanoo Architecten with Sasaki



E+//226-232 Highland, Boston
designed by Interface Studio Architects with Urbanica Design

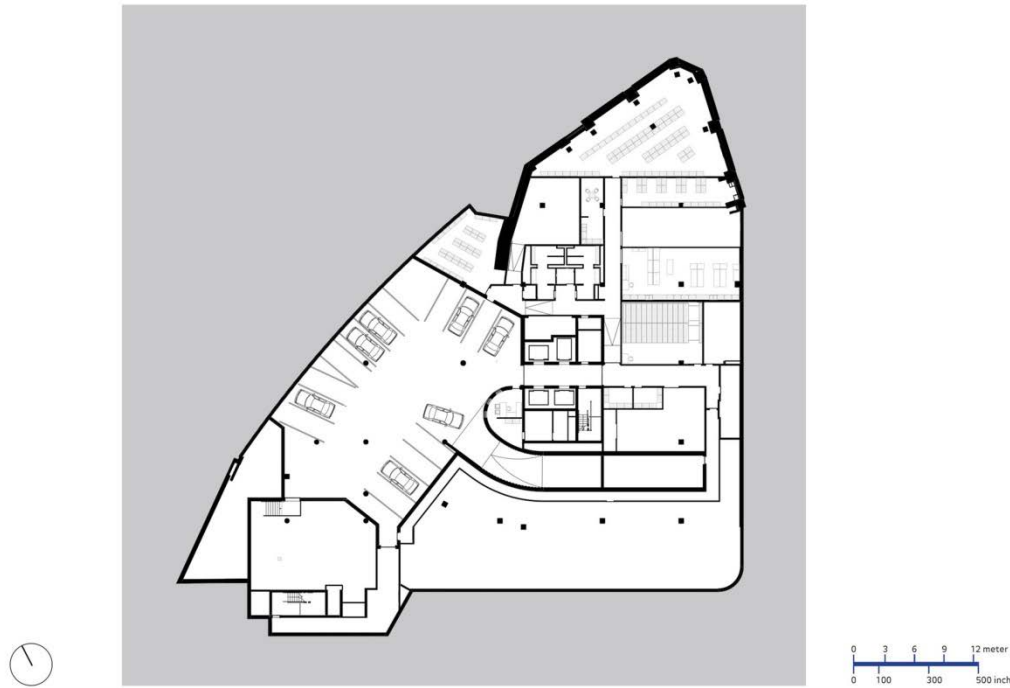




The Bruce C. Bolling Municipal Building, Boston
designed by Mecanoo Architecten with Sasaki



The Bolling Building designers were tasked with preserving 3 historic buildings at the heart of an urban square, while adding 250,000 square feet of space for City agencies and public service organizations.



The plan follows the contours of the site along the street line, while accommodating parking, public spaces, a broad range of different uses, and important pieces of Boston's history.



The 100 year old Ferdinand building, once a department store, continues to define the streets cape. Behind it, the new construction part of the project rises up behind it.



New and old finger into one another, suggesting a kind of organized growth and urban evolution. The historic building fronts were restored, while new construction is clearly expressed as a modern intervention.



The new architectural elements use brick in a very different way from the old buildings, while complementing them with their craftsmanship. Expanses of glass contrast with the heavier masonry walls.



A large interior space becomes a kind of public square that brings the community together. Stairs, overlooks, and ribbons of glass connect various floors and the exterior together.