



2021

# MEMBER RESOURCE GUIDE



© Robert Benson Photography  
Image courtesy of CBT Architects

# Welcome.

*Thank you for your membership with the BSA.*

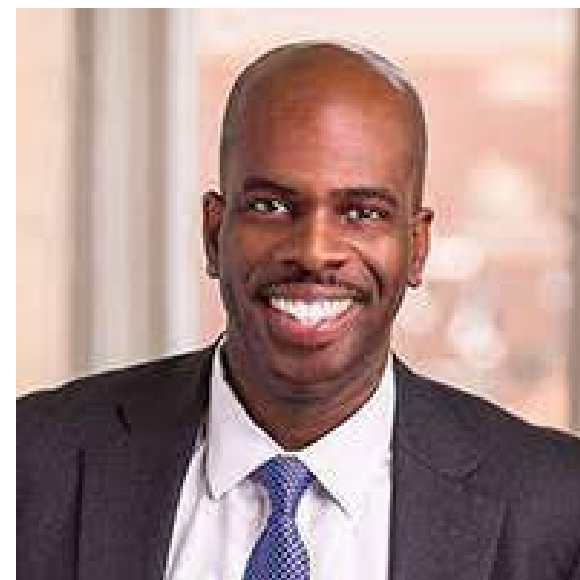
*You are now part of a community of over 4,500 members, including architects, engineers, builders, designers, and manufacturers, who bring together their collective expertise to advance their professions and address the urgent issues of equity and the environment. The strength of your membership lies within this diverse network and the many knowledge communities, programs, volunteer opportunities, and advocacy work they propel.*

*The past year has been particularly challenging as we faced not only a global pandemic but also renewed outcries to address the racial injustices that have pervaded our society for centuries. Now more than ever, we need the support of a strong community. We look forward to hosting you at BSA Space as we come together to advance the profession, and support each other as we work to create a resilient and just region for all.*

*Please explore this introductory guide for a glimpse into the many offerings of the BSA and to get the most out of your membership and the amazing network you now are a part of. Whether you need continuing education, a new job, colleagues who share your passion for a better world, or resources for transitioning to a post-pandemic workplace, the BSA is here to help.*



**Gregory O. Minott AIA**  
DREAM Collaborative  
BSA President



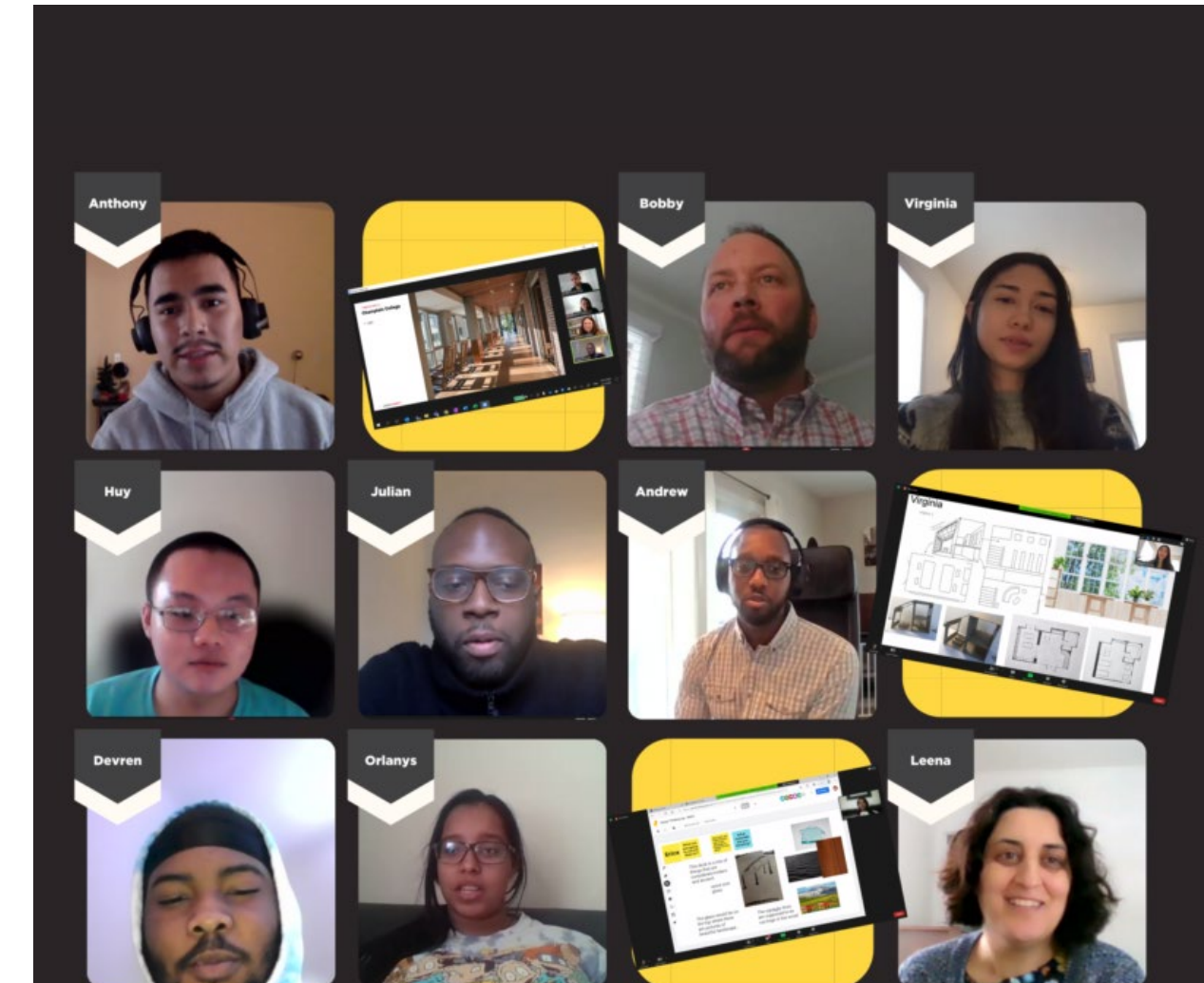
**'Embodied Carbon in Buildings' Conference**  
© BSA



**KidsBuild! On the Road**  
© Kit Castagne



**"Durable" exhibition curator tour**  
© Mic L. Angelo



**'Design Thinking' high school student outreach**  
[Screenshot from virtual live event]

A solid green horizontal bar.

# BSA 101

Navigating your organization

## What is the BSA?

The Boston Society for Architecture (BSA) is a diverse community committed to improving the quality of life for everyone through architecture and design. The BSA brings leadership about the built environment to New England's design profession and to communities throughout Greater Boston. The BSA keeps its 4,500 professional members working at the top of their fields while empowering children, communities, and municipalities to use design to create safe and healthy neighborhoods. Architecture can provide equitable solutions for housing, regional planning, and climate change.

The BSA uses the expertise of architects, designers, and building professionals to make good design a part of life for everyone who lives, works, and plays in Boston. The BSA serves everyone who benefits from the built environment. By hosting professional and youth design education programs, fostering community engagement and membership networks, and initiating civic transformation, the BSA is making this a region where architects thrive and communities flourish.

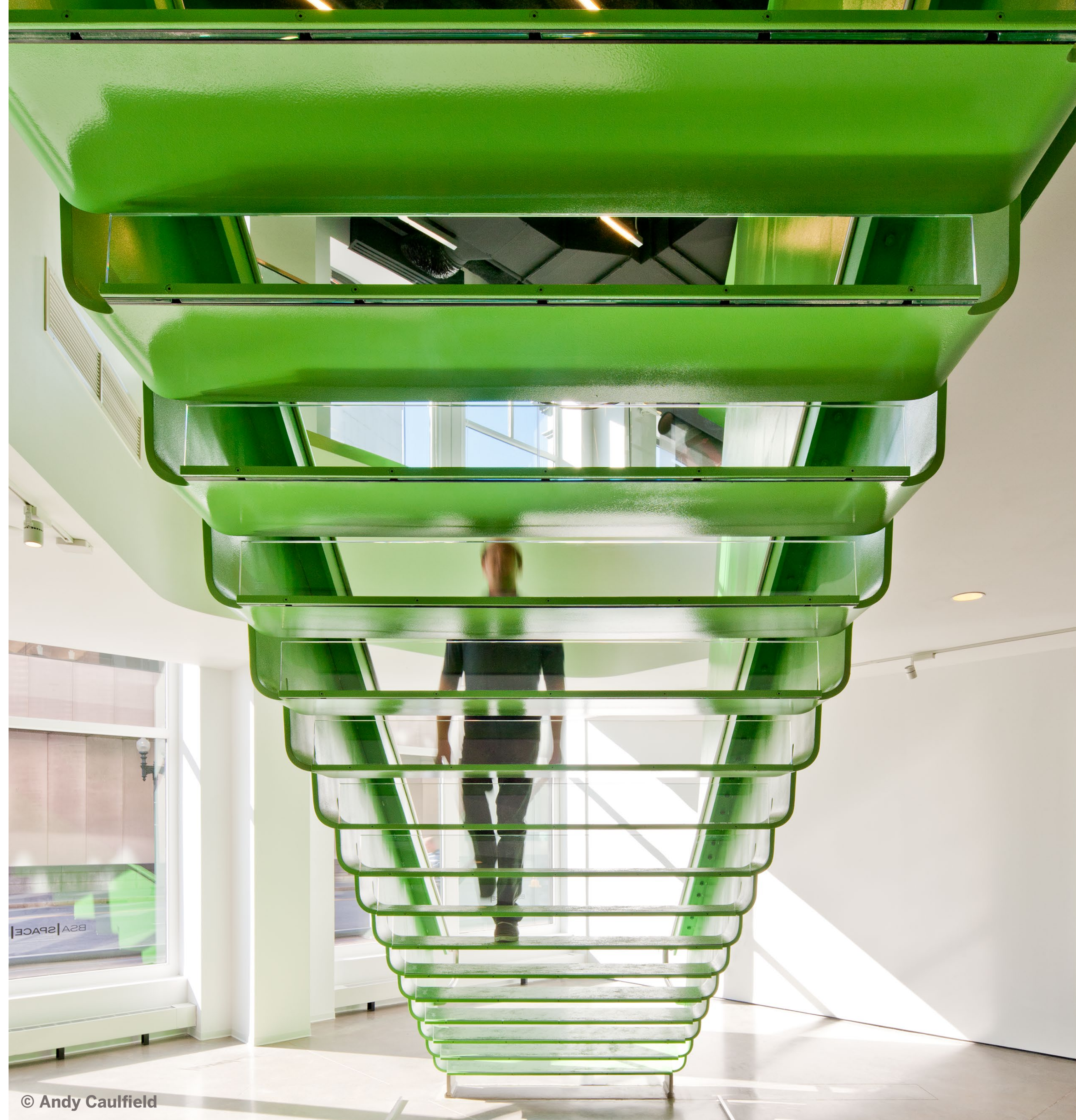
The BSA is made up of two parts:

1. **Boston Society of Architects/AIA (BSA/AIA)** is the eastern Massachusetts chapter of the American Institute of Architects (AIA).
2. **The BSA Foundation** is a nonprofit organization that assists children, communities, and cities by using architecture and design to improve our region.

### Three Impact Areas

Advancing Architecture, Environment, Equity.

For more information, visit [architects.org](https://architects.org).



# AIA + BSA

## American Institute of Architects (AIA) National

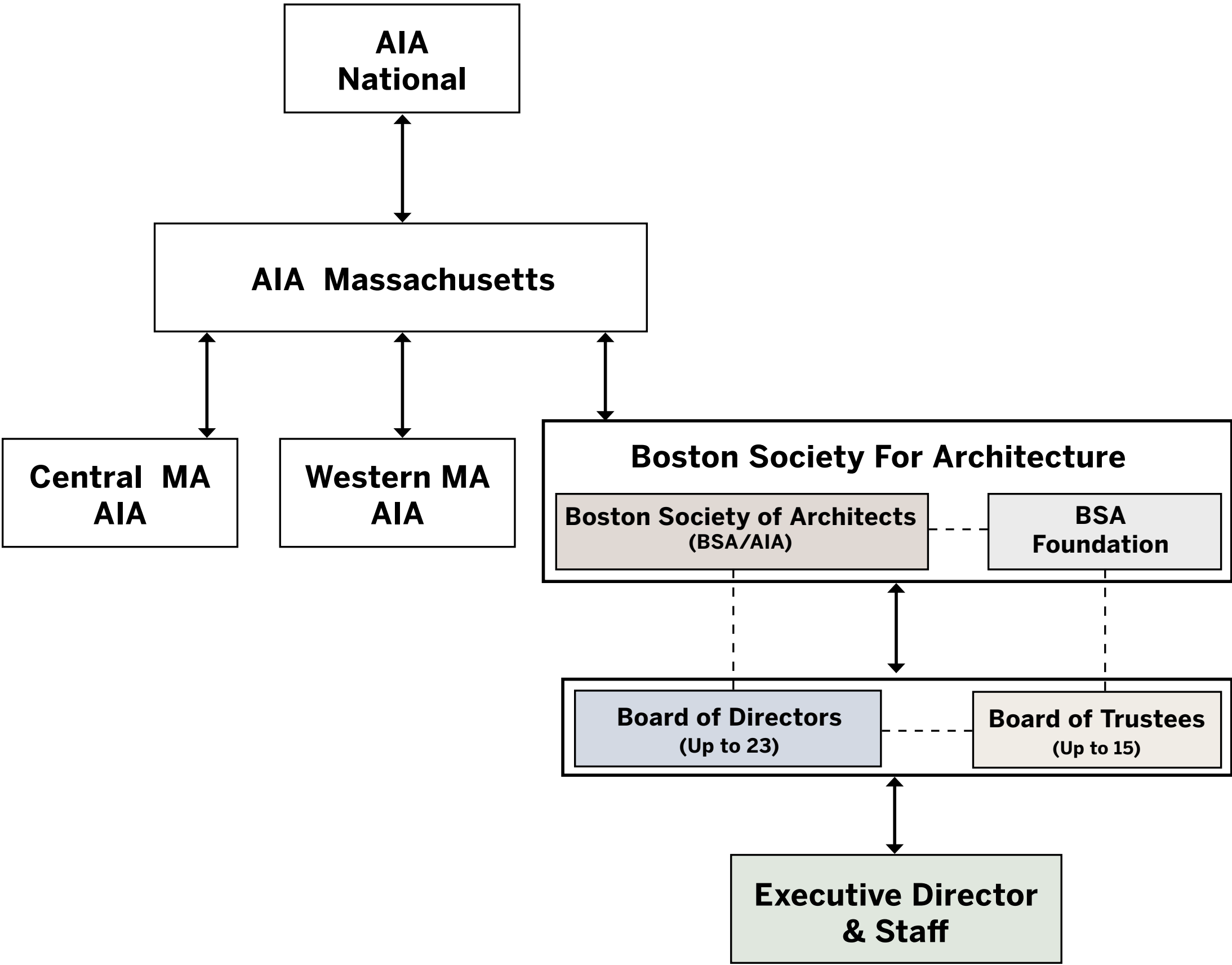
The BSA's parent institution, the American Institute of Architects (AIA), is a professional organization for architects in the United States. Headquartered in Washington, DC, the AIA offers education, government advocacy, community redevelopment, and public outreach to support the architecture profession and improve its public image. The AIA also works with other members of the design and construction team to help coordinate the building industry.

## AIA Massachusetts

AIA Massachusetts is the state-level chapter of the American Institute of Architects. AIA Massachusetts takes the lead in lobbying Capitol Hill on issues related to the architecture profession and the building industry.

## Boston Society of Architects/AIA (BSA/AIA)

BSA/AIA is the eastern Massachusetts chapter of the American Institute of Architects (AIA). The BSA is committed to making Boston a model of a resilient, equitable, and architecturally vibrant city and region.



# Elected Leadership + Committees

The BSA is led by a board of directors and a series of committees and delegations elected by BSA membership. Elections are held annually, and all BSA members are encouraged to cast a ballot.

## Board of Directors

|                           |                                  |
|---------------------------|----------------------------------|
| Gregory O. Minott AIA     | President                        |
| Anda French AIA           | Vice President/President-Elect   |
| Diana Nicklaus AIA        | Secretary                        |
| Daniel Perruzzi AIA       | Treasurer                        |
| Andrea Love AIA           | Vice President for Advocacy      |
| Susan Blomquist AIA       | Vice President for Communication |
| Sam Batchelor AIA         | Vice President for Membership    |
| Yanel de Angel Salas FAIA | Vice President of Practice       |
| William Ruhl FAIA         | Fellows Representative           |
| Seth Riseman Assoc. AIA   | Associate AIA Director           |
| Jacob Knowles             | Affiliate Director               |
| Zhanina Boyadzhieva AIA   | Director-at-Large                |
| Brooke Helgerson AIA      | Director-at-Large                |
| Ellen Watts FAIA          | Director-at-Large                |
| Dr. Taylor Cain           | Public Director                  |
| Courtney Sharpe           | Public Director                  |
| Jeffry Burchard AIA       | Design School Representative     |
| Paul Hajian AIA           | Design School Representative     |
| Tim Love FAIA             | Design School Representative     |
| Paul Pettigrew AIA        | Design School Representative     |
| Anthony Piermarini AIA    | Design School Representative     |
| Mark Rukamathu AIA        | Design School Representative     |

## Elected Committees

- *The Ethics Committee offers a knowledge base and mediating service for clients or peers who question an architect's professionalism, integrity or competence according to the AIA Code of Ethics and Professional Conduct (2017).*
- *The Honors & Awards Committee is responsible for all matters pertaining to prizes, scholarships or other means of recognition, including recommendations to the Board regarding Honorary Membership and elevation of Members to Fellowship in the Institute.*
- *The AIA College of Fellows is composed of members of the Institute who are elected to Fellowship by a jury of their peers.*
- *The Membership Committee focuses on the diverse concerns of the BSA/AIA membership: gauging interest, advising on issues and generating ideas that foster professional growth. The nine elected members of this committee serve as membership ambassadors to the building-industry community.*
- *The Nominating Committee recommends one or more individuals for each elective position and can counsel in regards to BSA committee structure and appointive positions.*

A full listing of committee descriptions as well as current and past members are available [here](#).



## BSA Foundation

*The BSA Foundation builds a better Boston by engaging communities, inspiring vision, and provoking positive change.*

The BSA Foundation uses the fundamental blocks of architecture and the design process—including community engagement, visualization, and creative problem solving—to assist local communities in addressing their challenges. Launched in 1971, the BSA Foundation works together with the BSA/AIA to make great architecture and the power of the design process available to everyone. Many of our programs, curated exhibitions, youth and family events, workshops and forums are free or have minimal charge. We offer resources and a design process that transforms ideas into visions that can become real places, spaces, and buildings. As a 501(c)3 charitable organization, our public programs rely on philanthropic support and your donations make our work possible.

The BSA Foundation is dedicated to:

- Ensuring access to design education for every child in Greater Boston.
- Providing access to design resources for every neighborhood in Boston.
- Empowering our cities and towns by visualizing design solutions for climate change, carbon proliferation, and housing shortages.

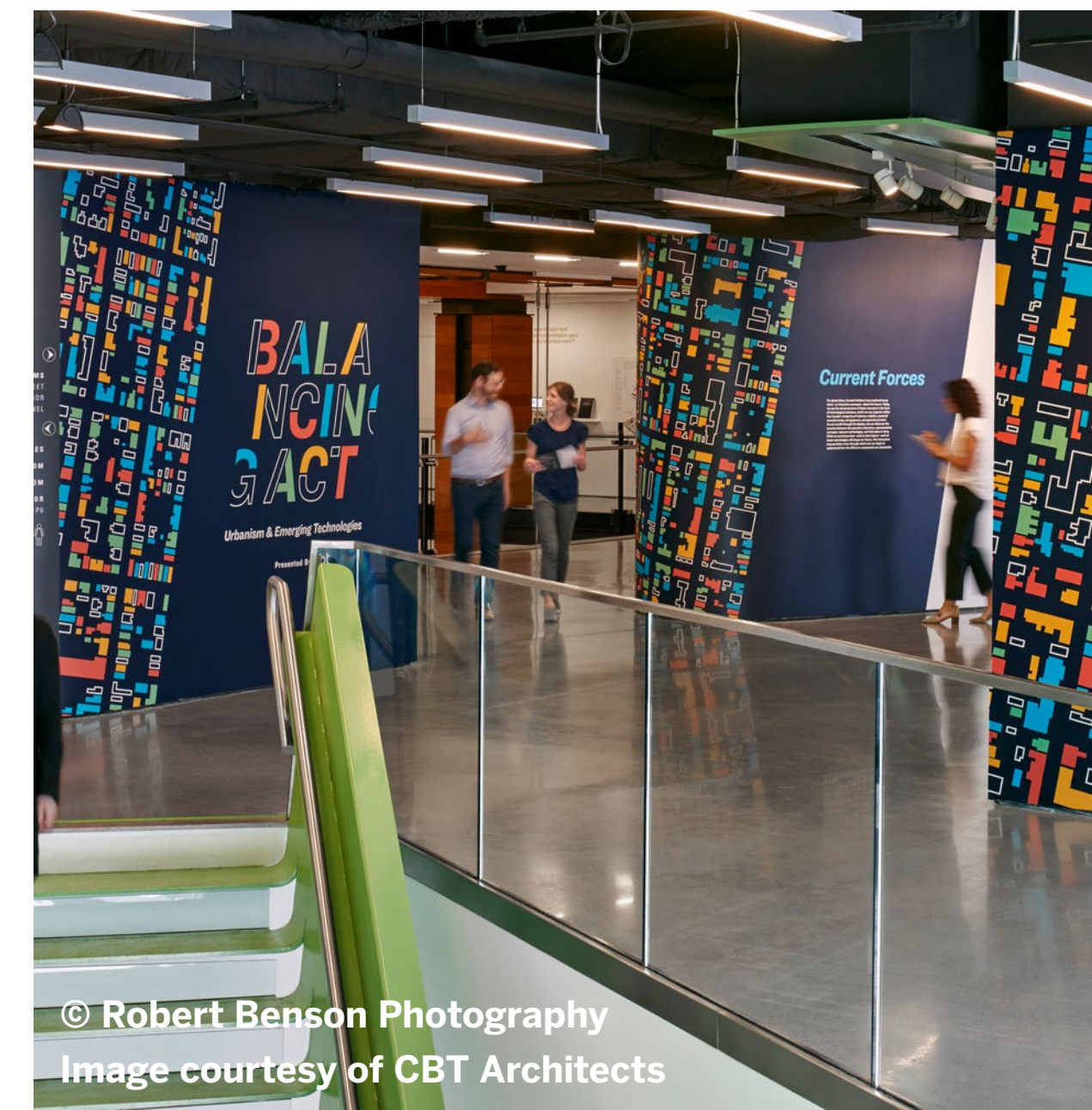
Explore our **public programs** to get involved and to learn more about how your donations support design in your community.

## BSA Space

The BSA Space is Boston's only center dedicated to the exploration of architecture and design. BSA Space hosts exhibitions on design and architecture, architecture cruises and walking tours, and other programs and events that foster exchange between design and construction, the profession and the public, and encourage collaboration across the city and world. Current, past and future exhibitions found [here](#).

Boston Society for Architecture  
290 Congress Street, Suite 200  
Boston, MA 02210-1024

Learn more about the BSA Space [here](#), or plan your visit [here](#).



# GET INVOLVED!

Ways to make an impact

## Membership

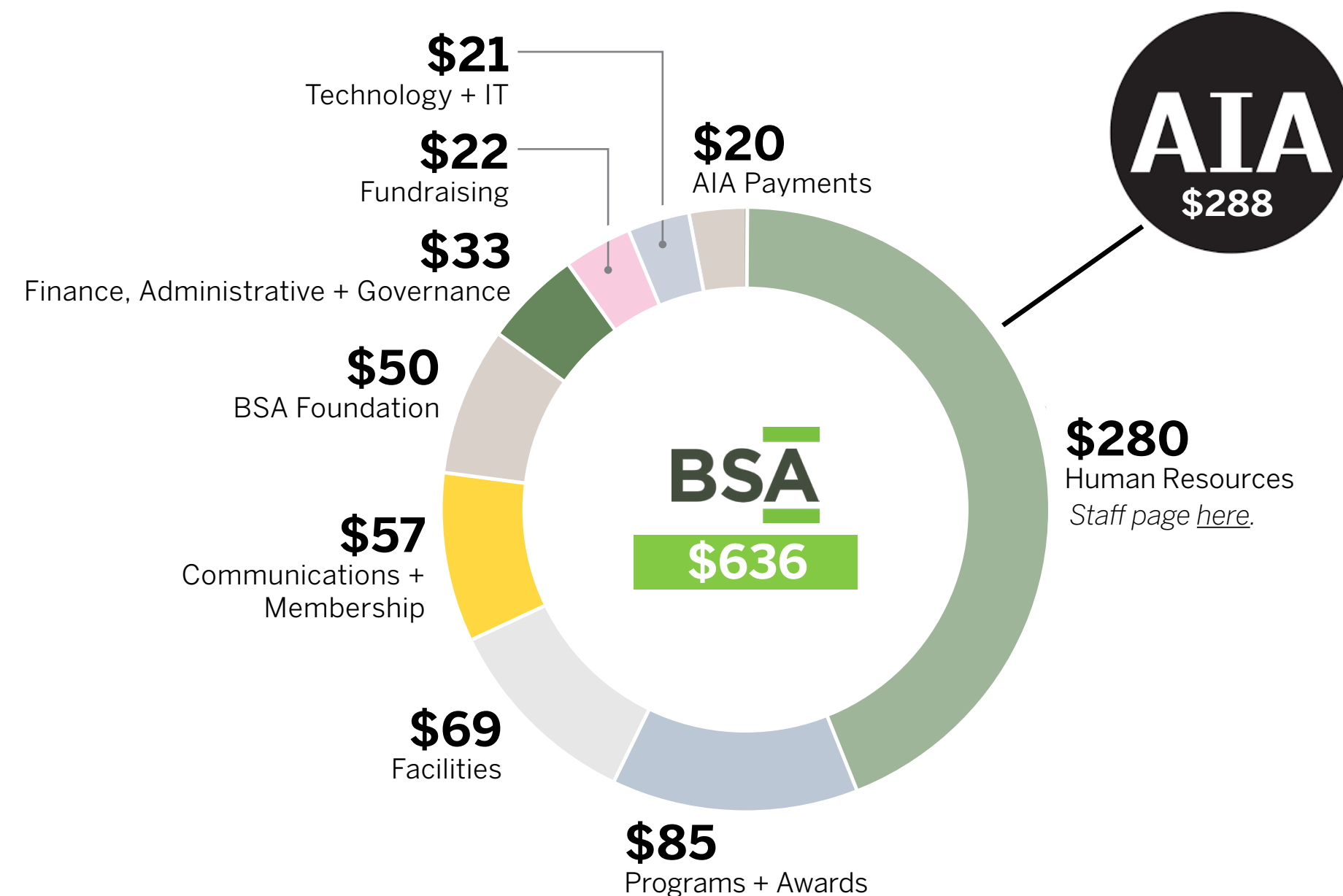
As the collective voice of the local design community, the BSA brings together building-industry professionals to collaborate, exchange ideas, learn and become part of our amazing network. Participating together, we can create better places to work and live through standards-setting, education and advocacy.

### Membership Options

|                             |                        |
|-----------------------------|------------------------|
| Individual BSA/AIA          | Firm                   |
| Associate AIA               | BSA Allied             |
| International Associate AIA | Professional Affiliate |
| Student Affiliate (FREE)    | BSA Subscriber         |

## Annual Dues

*\*Breakdown reflects 2021 Individual AIA/BSA Renewing Member rate of \$924*



## Member Resources

BSA Membership benefits include:

- Access to premier education opportunities
- Legislative advocacy on behalf of the profession
- Support for the creation of safe, fair, and equitable business practices
- Networking with architects
- Ways to give back to our communities
- Access to independent journalism and the latest local design news

Membership resources include:

**Knowledge Communities (Kno-Cos)** - forums for discussion, new ideas and professional growth

**Continuing Education (CE)** - AIA credits are available through select BSA/AIA events

**Directories** - find an architecture firm, product, service or BSA member

**EDI Resources** - educating ourselves and raising awareness of the challenges at hand as we work to foster inclusion throughout our organization, the profession, our workplaces, and communities

**Design Awards** - celebrate winning designs or view upcoming calls for entry

**Jobs Board** - the Hub for architecture and building-related career resources

**AIA Trust** - a free risk management resource

**Homeowner's Project Handbook** - a resource for homeowners taking on a renovation, addition or new construction project

**COVID-19 Resources for Architects** - a collection of resources and assets related to the COVID-19 virus response

**Rentals** - host an upcoming event or meeting at our space at a 50% discount

View membership resources and information at [architects.org/members](https://architects.org/members).

## Knowledge Communities (Kno-Cos)

Kno Co's are a collection of BSA member groups, networks and committees that are forums for discussion, new ideas, and professional growth. Each plans and hosts its own events and has a dedicated mailing list, making it simple to tailor your inbox to your interests. Every Knowledge Community is member-led and grassroots, creating numerous opportunities for active participation and leadership.

Currently, 43 active Knowledge Communities meet to create community, discuss common interests, and plan and host programmed events. Knowledge Community events are free for members (\$10 for non-members), open to all, and virtual attendance is nearly always available [note: due to Coronavirus protocols at BSA space, all Knowledge Community events are currently virtual-only].

Several of the Knowledge Communities, including Women in Design, EDI, and Young Professionals, have grown to a large scale and include subcommittees and partnerships outside of the BSA. If these groups are of interest to you, we recommend reaching out to the KC Co-chairs of these committees for more detailed information.

All Co-Chair contact information is available on the BSA website on each **Knowledge Community page**.

### *I'm passionate about...*

#### Advocacy

Access Committee  
AIA Massachusetts Government Affairs  
DOCOMOMO  
Global Design Initiative for Refugee Children  
Open Architecture Collaborative Boston

#### Building Design

BSA/SCUP College and University Roundtable  
Building Enclosure Council  
Codes Committee  
Design for Aging Committee  
Healthcare Facilities Committee  
Historic Resources Committee  
Housing Committee  
K-12 Educational Design  
Residential Design Committee

#### Business + Operations

Administration and HR Network  
Finance & Operations Network  
Marketing/PR Network  
IT Wizards

#### Design Tech

Design Visualization  
MakeTANK  
MKR|MGR  
Revit Users Group  
SketchUp Bootcamp  
Vectorworks Users Group

#### EDI

BosNOMA  
Equity, Diversity, and Inclusion (EDI) Network  
LGBTQ Network  
Women in Design (WiD)

#### Sustainability

Carbon Leadership Forum (CLF) Boston  
Committee on Resilient Environments (CORE)  
Committee on the Environment (COTE)  
Passive House Massachusetts  
Sustainability Education Committee

#### Practice Management

Emerging Professionals Network (EPNet)  
Firm Principals Roundtable  
Global Practice Network  
MetroWest Network  
Project Management Roundtable  
Small Practices Network  
Women Principals Group

#### Urban Design

INFRASTRUCTURE  
Placemaking Network  
Urban Design Committee

*Don't see your passion? Propose your own Knowledge Community by sending **this form** to [sgreen@architects.org](mailto:sgreen@architects.org)!!*

## Community Outreach

The BSA works to make great architecture and the power of the design process available to everyone. Many of our programs, curated exhibitions, youth and family events, workshops, and forums are free or have minimal charge. There are many opportunities to **volunteer** to support initiatives that use design to advance growth and positive change for individuals, communities, and cities..

In response to COVID-19, the Boston Society for Architecture quickly jumped into action, mounting direct response community programs while working with our partners to continue planning new and ongoing initiatives for Greater Boston's children, families, and neighborhoods.

2020 ignited long overdue conversations on Race. In response, the BSA launched **Race & Architecture** as a series to listen and learn about the challenges in our communities, workplaces and within architectural education. Our next challenge is to move from conversation to action – to demonstrate how architecture and design can make an impact through education, practice, and community.

As part of broader BSA initiatives toward Equity, the BSA has curated a wealth of programs and resources toward advancing **Equity, Diversity, Inclusion**. When designers come together to change the systems that perpetuate violence and cruelty, we will harness our energies to create more just, equitable, and inclusive communities.

Recent Examples of BSA community outreach and education:

- **Youth Education**
- **Virtual Learning Expands BSA Kindergarten Program**
- **Boston Mayoral Candidates Weigh in on the Built Environment**
- **Design Thinking Day Introduces High School Students to Architecture**
- **Triple-Decker Thursdays**
- **Cityprint**
- **Partnering for Positive Impact**
- **Community + Collaborative Design**



## Advocacy

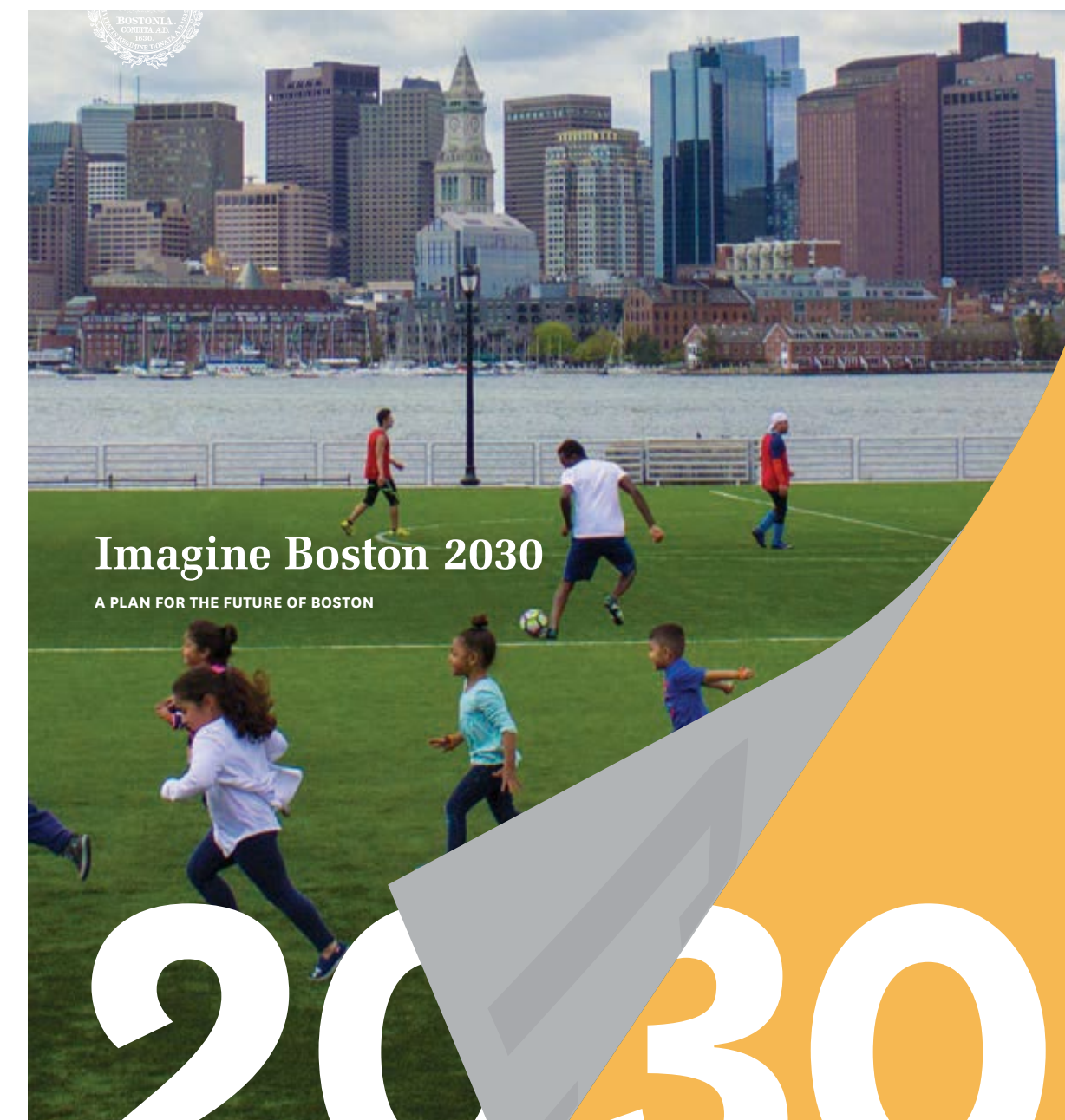
"...Major policy issues are facing the nation, Massachusetts, and Greater Boston. These include the implementation of Imagine Boston 2030 and Climate Ready Boston; and working on laws, regulations, and policies that will maintain Massachusetts' role as a national leader in climate change, affordable housing, mass transit, social equity, and other issues critical to our buildings and communities."

- Jay Wickersham FAIA, 2018 BSA/AIA President

The BSA advocates for regulation, legislation, and community action across the areas of **EDI**, environment, and architecture practice. The action takes place through the BSA board as well as in conjunction with the AIA Massachusetts Government Affairs Committee. Look out for direct calls to action via BSA News and think of joining the Government Affairs Committee or Knowledge Community to get more involved.

Recent Examples of BSA advocacy:

- **Supporting a net zero code**
- **Pandemic outdoor dining regulations**
- **Support of federal infrastructure bill**
- **Living with Water competition**
- Additional positions **here on the BSA website**



# Resources

## Quick Links

[Jobs](#)

[EDI Resources](#)

[COVID-19 Practice Resources](#)

[ARE Prep & Licensing](#)

[Member Resources](#)

## Questions?

Reach us at [membership@architects.org](mailto:membership@architects.org)  
or [bsa@architects.org](mailto:bsa@architects.org)

## What do I do next?

- Reach out to a **Knowledge Committee Co-Chair**
- Check out the **calendar** to register for an event
- Explore **public programs and volunteer opportunities**
- Stay up-to-date by following the BSA on:



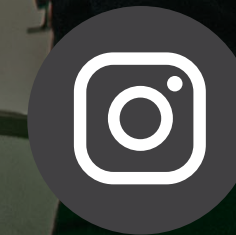
Facebook



Twitter



LinkedIn



Instagram

# THANK YOU.

A chapter of the American  
Institute of Architects (AIA)  
and a community nonprofit.



Boston Society for Architecture  
290 Congress Street, Suite 200  
Boston, MA 02210-1024  
Phone 617-391-4000

[architects.org](http://architects.org)