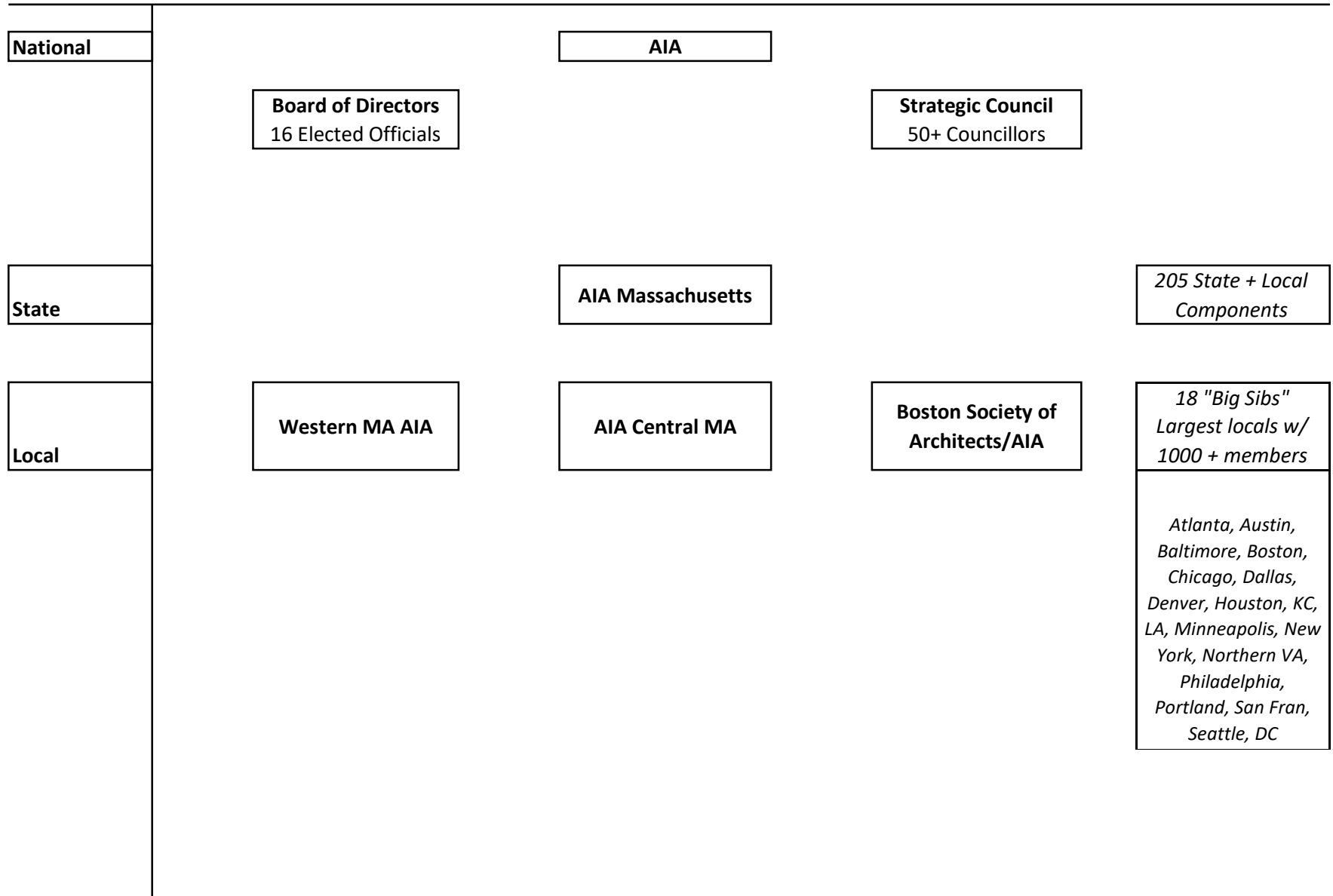


AIA National Organizational Chart



How Do We Fit Into the National AIA Network?

AIA governance is structured into national, state and local levels. There are over 94,000 members nationwide in the AIA, of which more than 3,500 are in Massachusetts. The BSA is both the second largest local chapter and the second oldest (along with Philadelphia and Chicago). AIA was founded in 1857 by 13 New York architects and the BSA was established in 1867.

National is governed by a 16 member Board of Directors that includes the Executive Officers, Associate Director, CACE (Council of Component Executives) Director, Student Director (AIAS), six Director-at Large, two Public Directors, and the Executive Vice President. A fifty-plus member Strategic Council includes at least one Director from every state and at-large, elected members. Massachusetts also has representatives on the Fellows Board of Directors, Young Architects Forum (YAF), and the Regional Associates Directors.

AIA Massachusetts is the state advocacy organization representing the BSA and the Central and Western Massachusetts Chapters on legislative and regulatory issues. The AIA Massachusetts Board of Directors includes nine Directors, three representatives of each of the three Massachusetts chapters.

There is one other informal grouping worth noting: Sibling Chapters. Every AIA chapter in the country is part of a group of like chapters. The BSA is part of the "Big Sibs" that also includes — Atlanta, Austin, Baltimore, Chicago, Dallas, Denver, Houston, Kansas City, Los Angeles, Minneapolis, New York City, Northern Virginia, Portland, Philadelphia, San Francisco, Seattle and Washington DC. The officers and executive directors of these chapter groupings, meet periodically to share information and share expertise.

