

BSA Auction Fundraiser

2020 Catalog

September 15 - 17



BOSTON SOCIETY
FOR ARCHITECTURE



Table of Contents

Drawings	3
Prints	5
Mixed Media Work	12
3D Objects	17
Decor	29
Jewelry	30
Paintings	33
Photography	39
Experiences	49

To bid, please visit: bidpal.net/auction

Welcome!

Welcome to the Boston Society for Architecture's second annual auction—coming to you this year in the comfort of your own home! This three-day virtual auction supports the BSA's mission of improving the quality of life in Greater Boston through architecture and design. Bid on your favorite artwork or experiences throughout the day on September 15, 16, and 17, and join us on September 17th for a final day soirée! Each day, we will feature special items up for grabs, and bidding will be open all three days.

To bid, please visit: bidpal.net/auction

Drawings



Mark Diethelm

Artist Statement:

Where do you live?

2017

Watercolor, marker, pencil
12" x 9"

Starting Bid: \$60

Item #2

I am a registered Architect by day, artist by night. I typically work with pencil, pen, watercolor and acrylics, but I have been dipping into digital art lately as the technology has greatly improved. Different mediums allow me to express different techniques and expressions. I am most influenced by my background in architectural design, a fascination with colors, layers and the grittiness of the city that people rarely notice. My studio is anywhere it needs to be, at home, a cafe, on the train or on a park bench, as I like to be immersed in my environment while working.



Mark Diethelm

Artist Statement:

I'm not Home Yet

2017

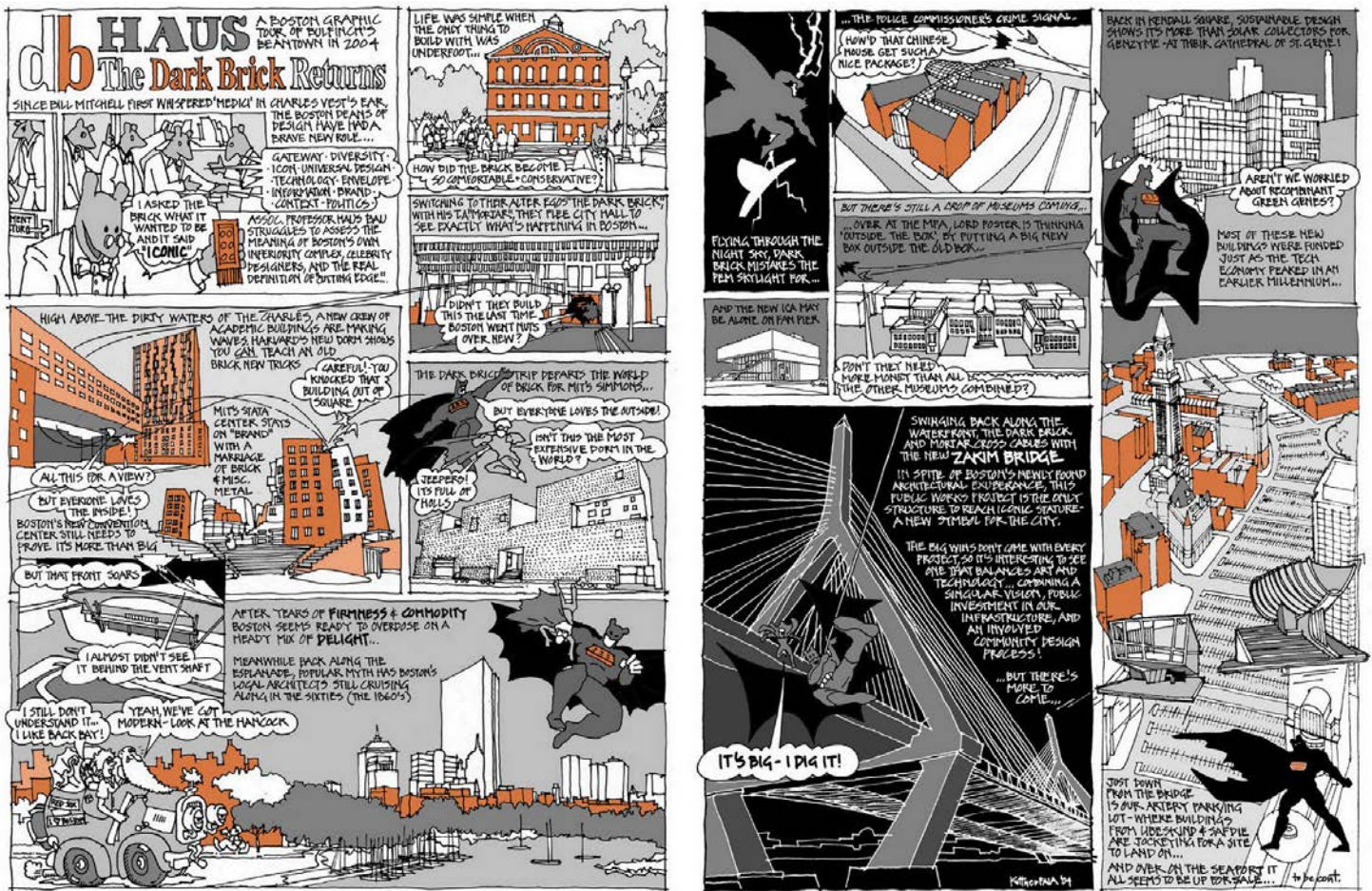
Watercolor, marker, pencil
12" x 9"

Starting Bid: \$60

Item #3

I am a registered Architect by day, artist by night. I typically work with pencil, pen, watercolor and acrylics, but I have been dipping into digital art lately as the technology has greatly improved. Different mediums allow me to express different techniques and expressions. I am most influenced by my background in architectural design, a fascination with colors, layers and the grittiness of the city that people rarely notice. My studio is anywhere it needs to be, at home, a cafe, on the train or on a park bench, as I like to be immersed in my environment while working.

Prints



Peter Kuttner

HAUS - The Dark Brick Returns

2004

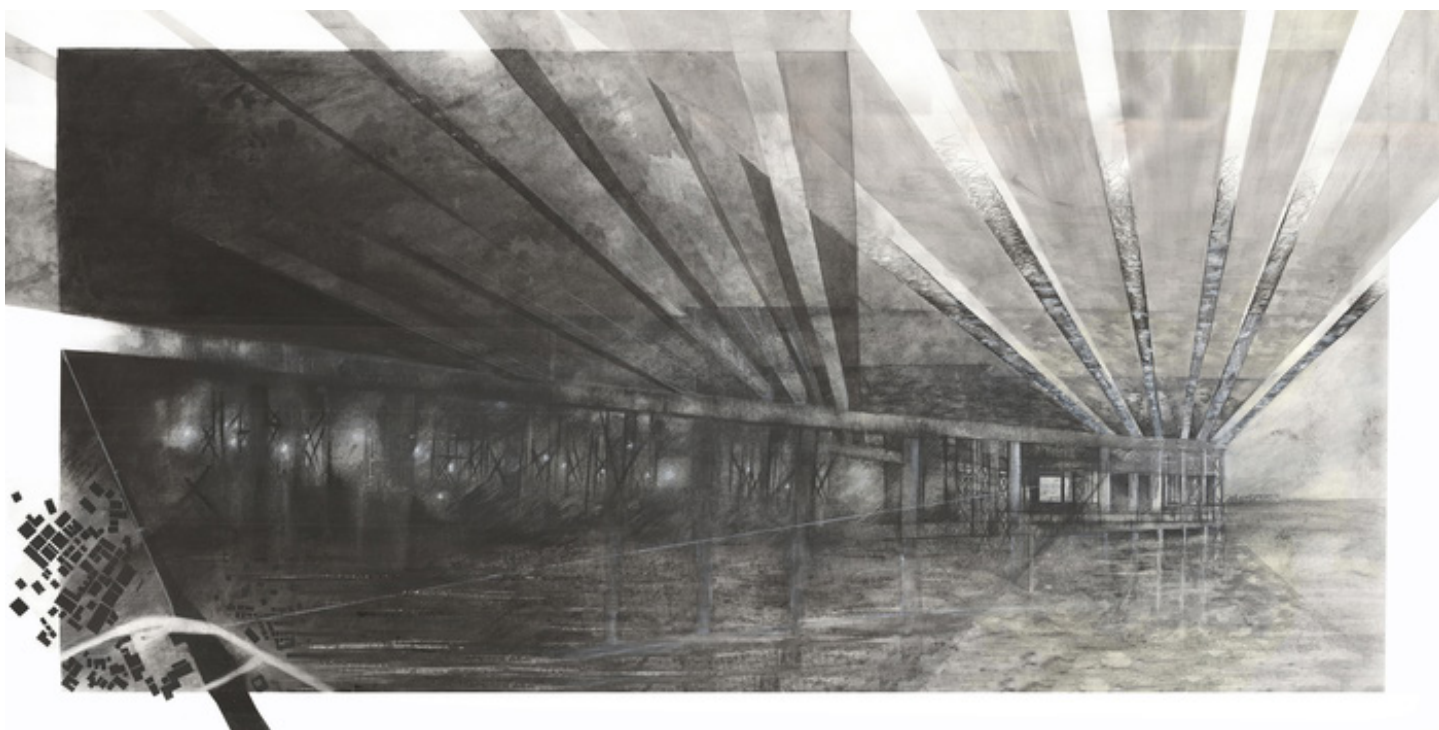
Mixed Media
28.5" x 21.5" (Framed)

Starting Bid: \$340

Item #6

Peter Kuttner FAIA, Principal at CambridgeSeven. He sits on the BSA Foundation Board of Trustees, was past President of the BSA Board, sits on numerous committees, and is the Chancellor for AIA College of Fellows.

HAUS - The Dark Brick Returns was originally created for ArchitectureBoston Magazine. The comic is a parody of Art Spiegelman's Pulitzer Prize-winning MAUS graphic novel. The story is introduced by associate professor Haus Bau, a play on the Bauhaus, and the secret identity of Dark Brick. He and his Teaching Assistant Mortar then lead the reader on a tour of Boston neighborhoods.



**Ponnappa
Prakkamakul**
Nightscape

2010
Metal Print
10" x 20"

Starting Bid: \$100

Item #7

As a painter and a landscape architect, site investigation and immersion plays an important role in my work. I explore sites and environments using the painting process as a tool to experience, understand, and form connections with my surroundings. My art reflects this immersive experience, engaging with the landscape through the performative acts of searching, studying, and collecting natural materials to paint with. In the studio I apply collected materials such as soil, plants, ground water, and rust from found objects on paper as a painting medium that depicts the landscapes where they originate. These natural materials represent the real colors of the earth and texture of the leaves the goal is to make the viewers conscious of the detail of their surrounding environment. For me, this painting process not only creates a connection between myself and the site but also foster a deeper connection to places as an immigrant - through art, I cultivate my sense of place in this new land.



**Meg Ann
Moorhead**
Blue Peacock

2019
Silkscreen Print, 3/10
24.25" x 31" x .5"

Starting Bid: \$400

Item #8

Med Ann Moorhead studied fashion at Pratt Institute, then communication design at Parsons School of Design. She then went on to a career in advertising with a focus on cut paper illustration and poster design. She worked for Saatchi and Saatchi, The Metropolitan Transportation Authority, Sports Illustrated and the Saint Martin Bureau of Tourism. She has won awards from The New York Art Directors Club, American Public Transit Association, Creativity Magazine and The Rx Club Award of Excellence.

In 2008 she moved to Vienna, Austria and studied painting and drawing at the Vienna Volkshochschule. Returning to the states in 2016, she combined her love of silkscreening with drawing, painting, fashion and color. Starting with a monoprint, she layers on colors to find the beauty in the jumble. MAM wants to bring a smile to everyone's face through her art.



Victor Agran

Tower 2100

Print
16" x 20"

Starting Bid: \$120

Item #10

Tower 2100 is part of a speculative drawing project exploring the future architectural consequences of sea level rise and climate change. Victor Agran AIA is an Associate Principal with Architectural Resources Cambridge and Lecturer at Yale University with an interest in 1960s radical visionary architecture, as well as the future impact of climate change.



**Bill Griffin
(Donated by
Michael B.
Williams AIA)**

Zippy Comic Strip

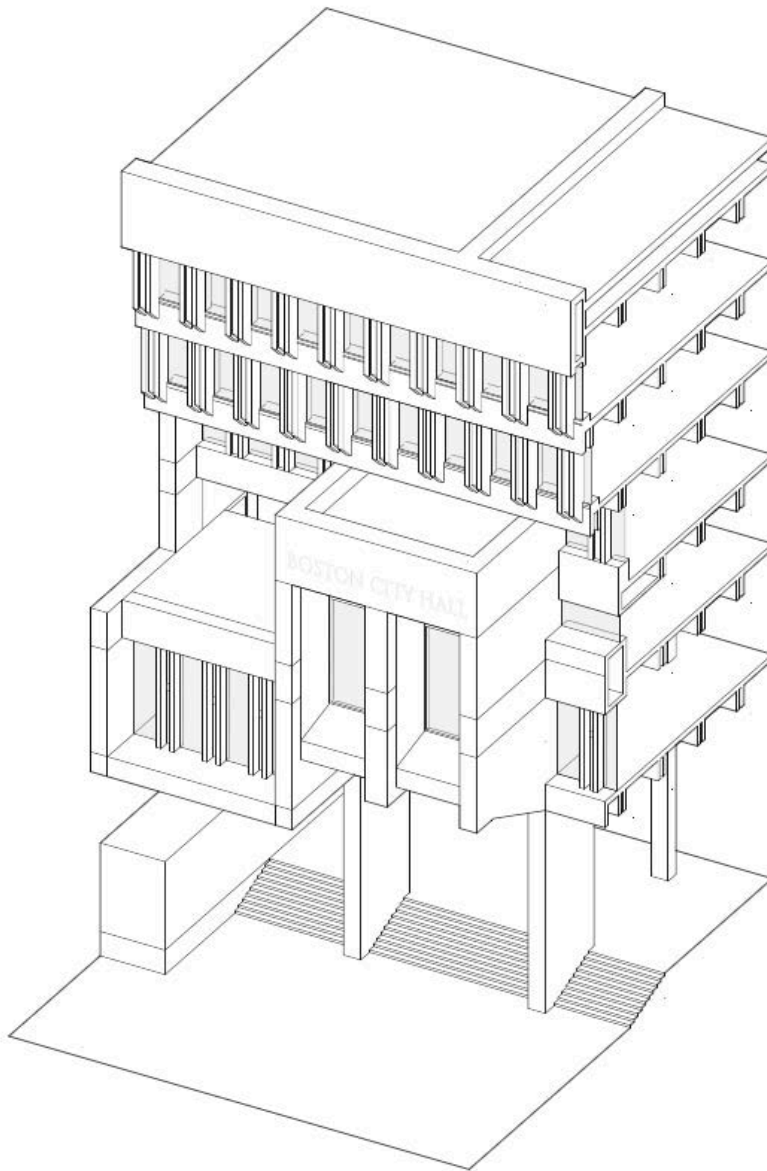
2004

Hand-colored comic strip
10" x 18" (approx.)

Starting Bid: \$80

Item #11

Hand-colored cartoon panel, signed by the artist, Bill Griffin. It is matted and framed, and includes the original strip as it appeared in the Boston Globe in May, 2001.



OverUnder

Government Center
Building

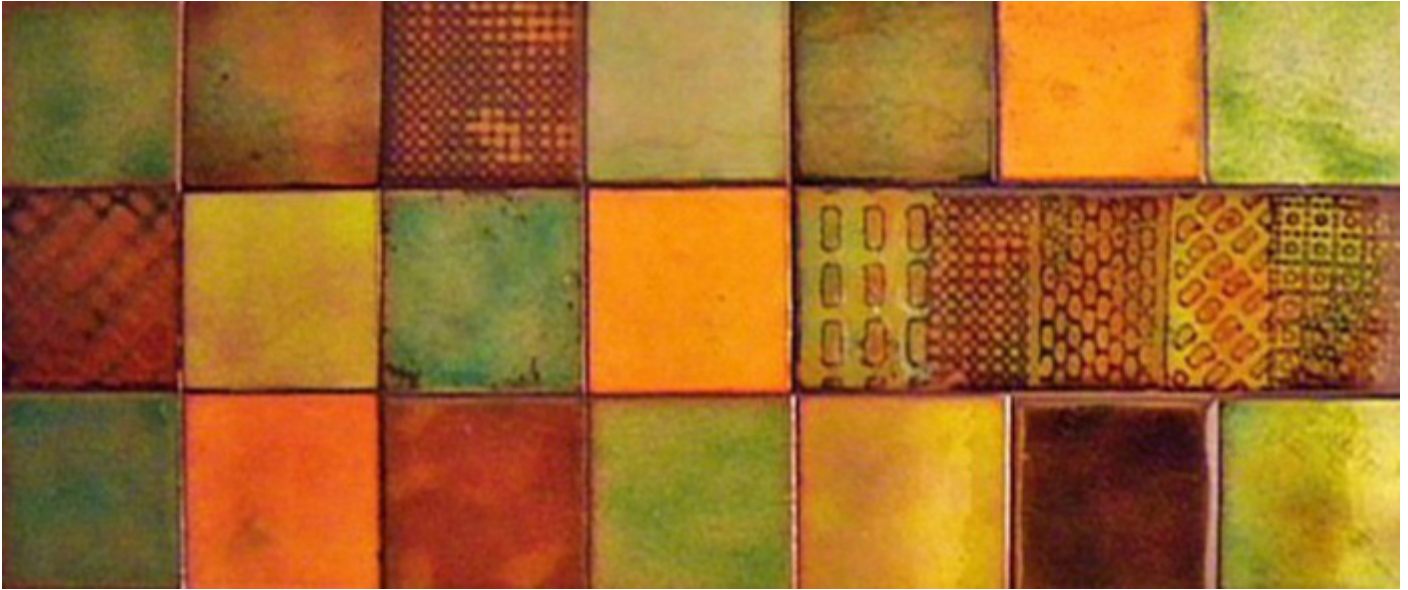
Print
17" x 20"

Starting Bid: \$20

Item #12

OverUnder is a architecture and design firm in Boston.

Mixed Media



Katharine Wood

Earth Zones

2013

Vitreous Enamel on Copper
12" x 18"

Starting Bid: \$200

Item #13

Katharine Wood is a second generation enamelist, and vitreous enamel has been my passion for over 30 years. The medium is unparalleled in the richness and variety of its colors.

The challenges are endless, a blend of science and art to achieve the desired results. Sometimes, however, one just lets the medium lead the way.



Jingwei Li and Tom Carrier

Emerson Little
Building

2020
Printed digital rendering and
3D-printed bookends
24" x 24" x 8"

Starting Bid: \$120

Item #34

This year, Elkus Manfredi's vis artists have teamed up with their in-house 3D fabrication team to submit pairs of art for the BSA auction.

This pair is a 24" framed Emerson Little Building rendering print and a set of 3D printed thermoplastic Lion Head bookends (from the building) with embedded steel weights. (3D scanned and re-modeled from the façade refurbishment process).



Jeremy Brant and Tom Carrier

Cathedral of the Holy Cross + Geometric Rendering

2020

Printed digital interior rendering and geometric rose window

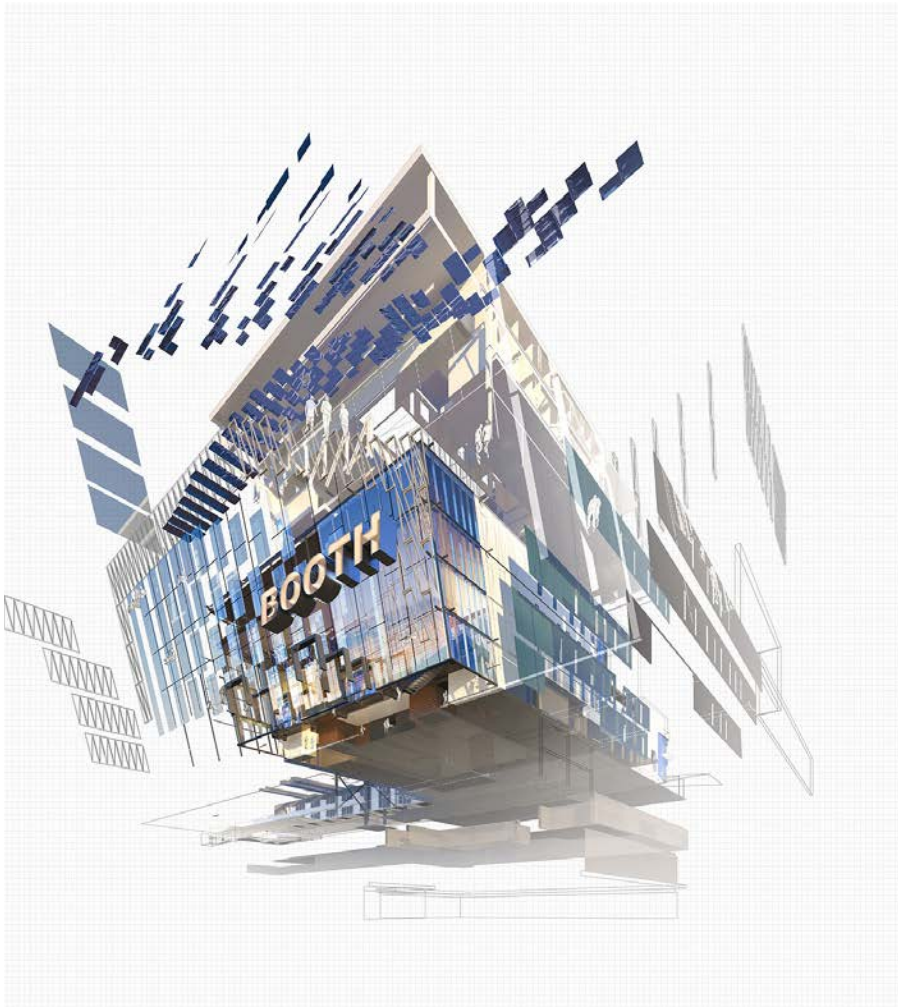
24" x 12" (illustration) + 9.8" diameter x 3/8" (3D print)

Starting Bid: \$120

Item #35

This year, Elkus Manfredi's vis artists have teamed up with their in-house 3D fabrication team to submit pairs of art for the BSA auction.

First in this pair is an interior digital illustration of a soft composition that interprets the atmosphere of the newly renovated Cathedral of the Holy Cross in the South End. This illustration is presented in a wide perspectival elevation format. The second piece is a geometric 3D printed Rose Window, made of photopolymer resin with a window hanging mount.



Howard Elkus, Kukhee Han, and Tom Carrier

Boston University
Joan & Edgar
Booth Theatre

2020

Printed digital rendering &
laser engraved sketch on
building sample
24" x 24" rendering, 8" x 10"
(approx.) building sample

Starting Bid: \$120

Item #36

This year, Elkus Manfredi's vis artists have teamed up with their in-house 3D fabrication team to submit pairs of art for the BSA auction.

This pair is a 24" abstracted digital illustration print of the newly completed Boston University Joan & Edgar Booth Theatre and a laser engraved / gold color painted sketch by the late Howard Elkus on a wall-mountable sample (~8" - 10" wide) of the building material.

3D Objects



Hasna Sal Corail de L'eau

2018
Glass
4' x 7'

Starting Bid: \$100

Item #15

Techniques are lampworking, kiln annealing and coldworking.

Hasna Sal has worked as an architect and urban designer, and has been sculpting glass since 2004. She describes her sculptures as “a cornucopia of planes, textures, tonalities, resonances, moods, emotions, morality, chaos and more. And finally, my sculptures are the voice of color.”

This work was donated by Sal in honor of Professor Jeff Stein.



Hasna Sal
Corail du Ciel

2018
Glass
4" x 7.5"

Starting Bid: \$100

Item #16

Techniques are lampworking, kiln annealing and coldworking.

Hasna Sal has worked as an architect and urban designer, and has been sculpting glass since 2004. She describes her sculptures as "a cornucopia of planes, textures, tonalities, resonances, moods, emotions, morality, chaos and more. And finally, my sculptures are the voice of color."

This work was donated by Sal in honor of Professor Jeff Stein.



Katharine Wood
Green Amoeba Dish

2017
Vitreous enamel on etched
copper
6" x 6" x 1"

Starting Bid: \$200

Item #17

Katharine Wood is a second generation enamelist, and vitreous enamel has been my passion for over 30 years. The medium is unparalleled in the richness and variety of its colors.

The challenges are endless, a blend of science and art to achieve the desired results. Sometimes, however, one just lets the medium lead the way.



The Sparta Ceramic Company

Set of Two Vintage
AIA Pottery Plates

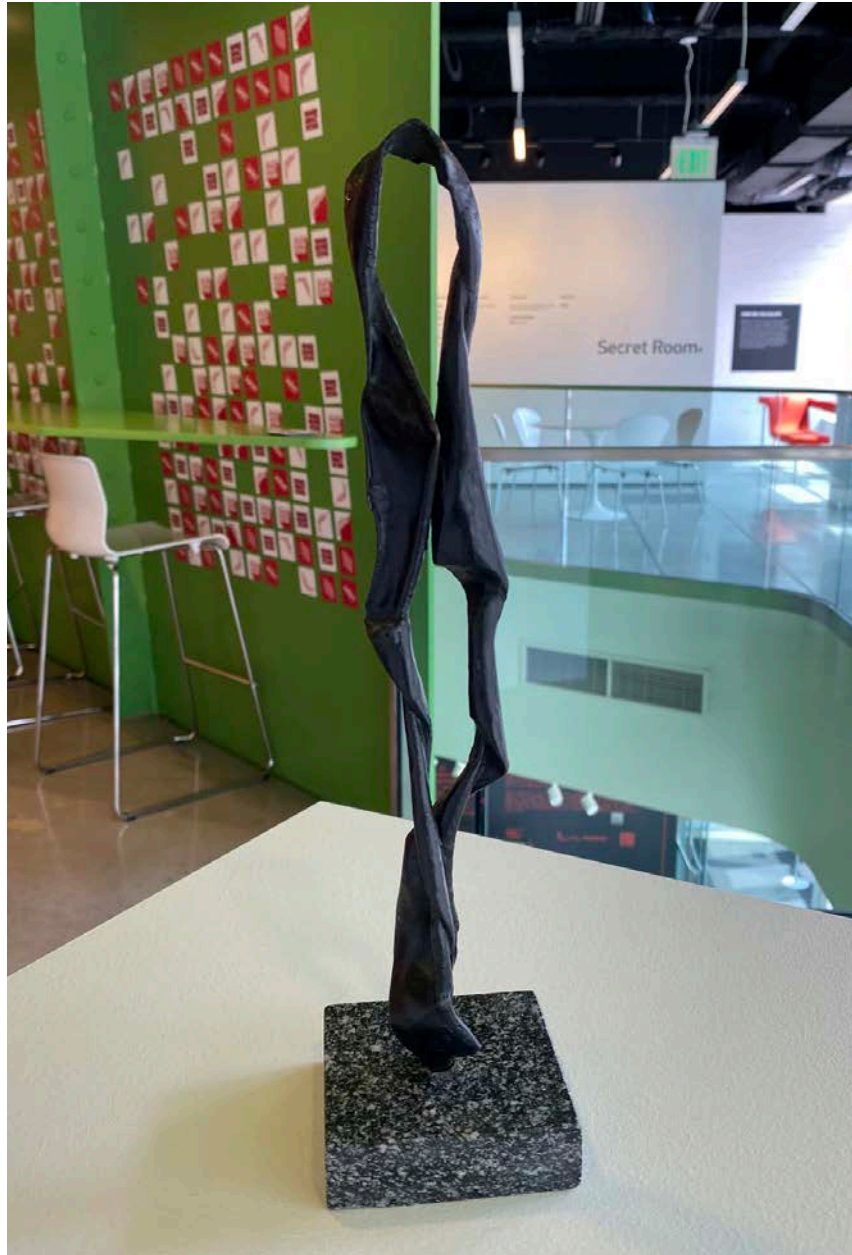
1957
Glazed clay ceramic
10" x 10" x 1" (each)

Starting Bid: \$200

Item #18

Commissioned by the American Institute of Architects (AIA) in 1957 to commemorate the Centennial of the founding of the nation's premiere professional organization for architects. Manufactured by The Sparta Ceramic Company and United States Ceramic Tile Company; "Romany Spartan" insignia.

These items were donated by Jack Glassman.



Maudegrasse

Silhouette

2017

Bronze

11" x 1.5" x 2"

Starting Bid: \$350

Item #19

Silhouette is an abstract rendition of the female spirit. Maudegrasse is a self-taught sculptor who developed a unique personal style labeled "the allure of intorsion". Maudegrasse's sculptures are mainly executed in bronze and are typically rendered in a small-to-medium scale. Maudegrasse resides and creates his sculptures in Cambridge, MA.



Joan Zagrobelny

Homage/SH

2018

Ceramic

16" x 16" x 13"

Starting Bid: \$340

Item #20

Handbuilt ceramic sculptural vessel with white terra sigillata on outside and black metallic glaze on inside. The textured surface retains the finger marks involved in the process of making the piece.

"I hand build my sculptures, coiling curvy, organic forms with highly tactile and visually engaging surfaces. My goal is to create forms that convey a living presence, that capture the transcendent within the material and express this consciousness as movement, gesture or stillness." — Joan Zagrobelny



Joan Zagrobelny
Crevice Urn

2018
Ceramic
28" x 10" x 11"

Starting Bid: \$280

Item #21

One-of-a-kind, hand built sculptural vessel, cut out in front, with hairline slit running from belly to lip, revealing interior space. Variegated, tactile surface retains the fingerprints left from the making of the piece.

"I hand build my sculptures, coiling curvy, organic forms with highly tactile and visually engaging surfaces. My goal is to create forms that convey a living presence, that capture the transcendent within the material and express this consciousness as movement, gesture or stillness." — Joan Zagrobelny



Christina Lanzl

Spatial Construction

Embossed aluminum over
wood armature
6.5" x 6.5" x 1.5"

Starting Bid: \$75

Item #23

Spatial Constructions are a series of small works on embossed aluminum. They are studies in geometry, often featuring "impossible figures"—spaces that can be drawn but cannot exist in reality. They are a creative continuum that exists in the void between right and wrong, holding the viewer captive, while radiating light and disquieting beauty.



Marc Margulies

Bowl

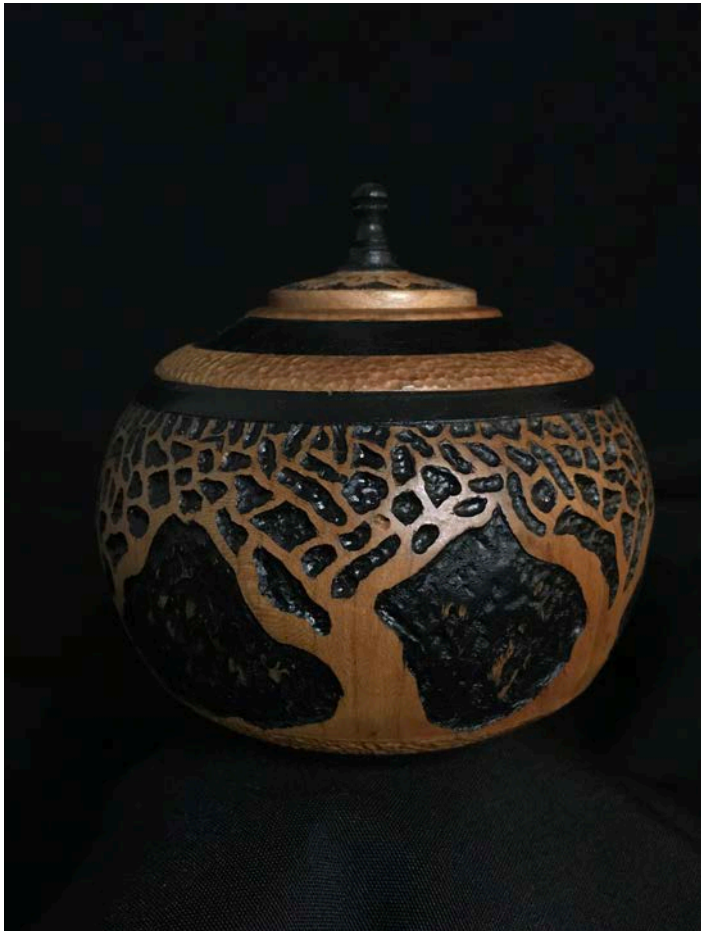
2019

Wood

Starting Bid: \$200

Item #25

Marc is a founding principal at Margulies Perruzzi.



Eric White
Bowl/Urn

Eric White Hon AIA is the executive director of the Boston Society for Architecture.

2019
Wood
4" x 5"

Starting Bid: \$160

Item #26



BSA MakeTank CityPrint Framed Tiles

2020
3D-printed tile and wood
24" x 24"

Starting Bid: \$450

Item #33

BSA MakeTank is one of the the Boston Society for Architecture's many Knowledge Communities.

In collaboration with the Boston Planning & Development Agency (BPDA), pbc Geographic Information Services (pbcGIS), BluEdge, AET Labs, Stratasys, and GrabCad, MakeTank's next endeavor is a project that will empower our community of makers to collaboratively improve Boston's ability to represent itself. This project will demonstrate the power of collective community making and its ability to inspire and represent an entire city through the creation of a new, digitally fabricated, City of Boston model for display at the Boston Society for Architecture.

Decor



Pomeroy & Co. Walnut End Table

2018
Walnut
26" x 19" x 19"

Starting Bid: \$240

Item #27

Pomeroy & Co. is a full-service design-build company serving the Greater Boston and New England area. We realize our clients' visions by upholding our mission: we are a community of dedicated construction professionals working passionately in the pursuit of uncompromising craftsmanship and service. Our design, custom millwork, and construction services collaborate under one roof in our converted mill building in Charlestown, Massachusetts.

Jewelry



Michela Davola Handmade Beaded Necklace

2019
Glass and clay beads
24" (approx.)

Starting Bid: \$30

Item #29

Michela Davola is the BSA's Senior Development Manager.



Michela Davola
Handmade Beaded
Necklace

Michela Davola is the BSA's Senior Development Manager.

2019
Glass and clay beads
24" (approx.)

Starting Bid: \$30

Item #30



Michela Davola
Handmade Beaded
Necklace

Michela Davola is the BSA's Senior Development Manager.

2019
Glass and clay beads
24" (approx.)

Starting Bid: \$30

Item #31

Painting



Iris Peretz

Crouching Tiger

2019

Acrylic and spray paint on
wood
8" x 8" x 1"

Starting Bid: \$200

Item #37

Artist Statement:

My paintings, sculptures, murals and public art projects embrace organic shapes and consist of mixed mediums which speak to our shared moment in time. I like to use recycled, upcycled and found objects as a shout out to mother nature. I respect living things and honor life in my spirited pieces. My color palette is bold, colorful and often shiny because we all like shiny things. Every piece I make contains a deeper message and intentionally communicates to the viewer. My art sparks conversation, humor and contemplation.



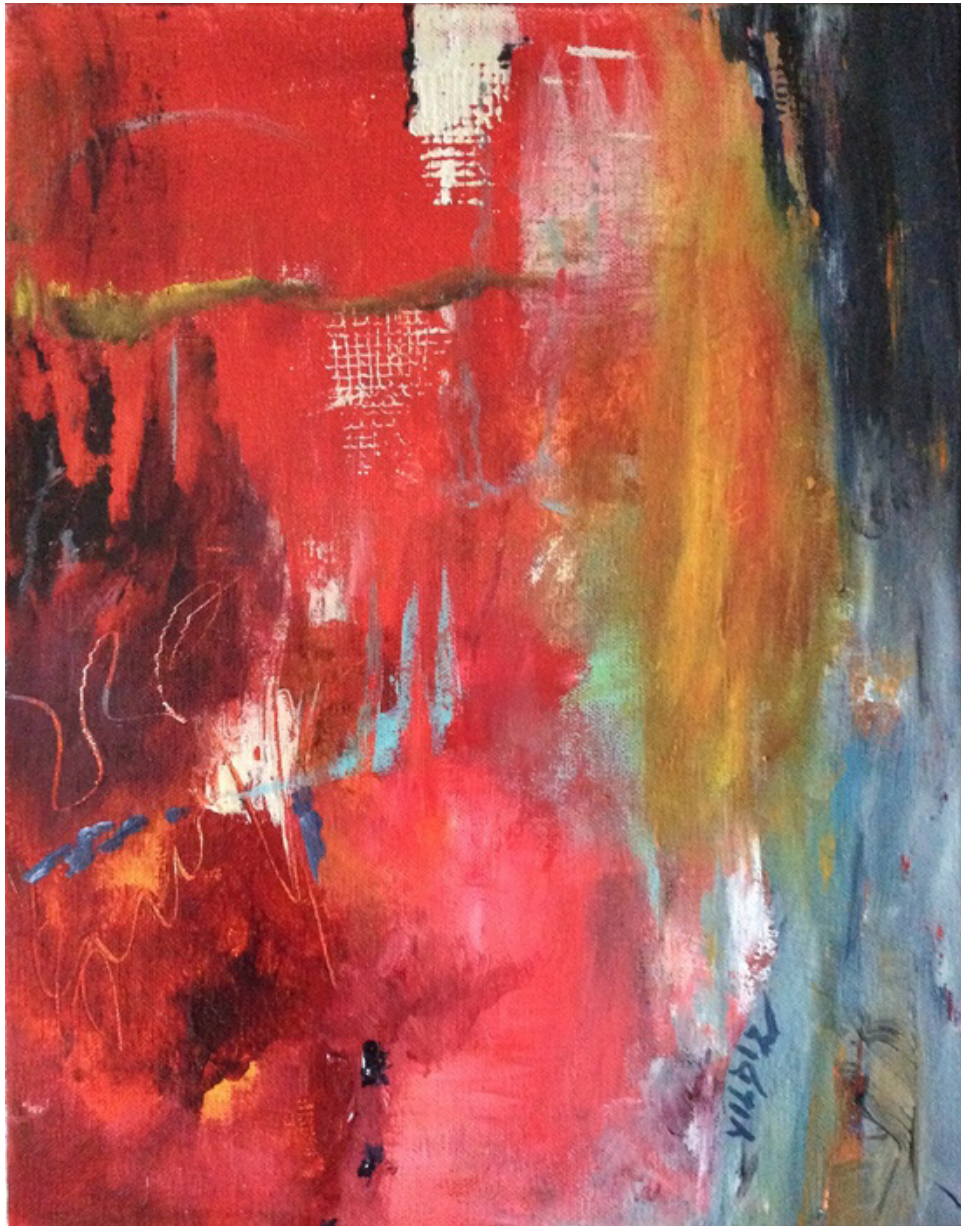
Thu Nguyen
The Meeting

2014
Oil on panel
16" x 20" x 1.5"

Starting Bid: \$500

Item #38

Artist Thu Nguyen creates realistic paintings with a sense of conceptual appeal. Inspired by the work of Andrew Wyeth.



Yildiz Grodowski

Infusion Interrupted

2019

Acrylic/mixed media

14" x 11" x 2"

Starting Bid: \$220

Item #40

Artist Statement:

I grew up in Istanbul, Turkey, but have spent most of my life in the Boston area. These two cultures constantly enrich and inspire me. In my early years, I designed sets for stage performances and residential interiors. If I don't find art, art finds me.

As a visual artist and a dancer, I find many connections between abstract painting and improvisational dance. Just as I let the music move me from within, I allow my artistic intuition to bring life to my brush.



Lonnie Ash
Boxing Gloves #2

2019
Oil on canvas
30" x 15" x 2"

Starting Bid: \$270

Item #41

Lonnie Ash is an artist and architect working in the Boston area.



Stephanie Hubbard

Passage

2020

Oil and mixed media on
wood panel

24" x 24" x 1.5"

Starting Bid: \$480

Item #42

Painting is an extension of Stephanie Hubbard's practice as a landscape architect. The exploration of scale, form, pattern and texture in different formats informs all areas of her creative practice.



Tiffany Beattie

Enchanted

2019

Acrylic on canvas

16" x 20"

Starting Bid: \$200

Item #43

Tiffany Beattie is an artist from the Bay Area, California. This work is part of the artist's Mood Series. Beattie creates both figurative and abstract work.

Photography



Jonathan Sachs

Prairie Bird

2012

Photograph

38.5" x 25"

(Mounted on foamcore)

Artist Statement:

This is an aerial image of the Palouse Farm country, where plough patterns in the spring create all sorts of remarkable abstracts. I flow over this area for 45 minutes, taking hundreds of images, but this is my favorite: it shows the form of a giant bird.

Starting Bid: \$40

Item #46



**Peter
Vanderwarker**

Boston
from Eastern Point

Photograph
24" x 36" (matted, framed)

Starting Bid: \$1000

Item #32

Boston from Eastern Point was taken in January 2020, showing the city from 22 miles away.

Peter Vanderwarker's work received Institute Honors from the American Institute of Architects in 1991. His photographs are in the collections of the Museum of Fine Arts, Boston, the Addison Gallery of American Art, and the Museum of Fine Arts, Houston.

Peter has a Bachelor of Architecture degree from University of California, Berkeley, and he was a Loeb Fellow at Harvard University in 1997. His work has been supported by grants from the National Endowment for the Arts and the Graham Foundation.



Saurabh Mhatre

Light & Form

2019
Photograph
11" x 14"

Starting Bid: \$200

Item #49

Artist Statement:

With my photographs, I aim to capture the finest beauty in even the simplest of things. I love the challenge of depicting a three-dimensional space or an object, into a two-dimensional photograph and making sure the photograph still reads as the original space or the object. I want my photographs to talk to the viewer, rather than just the viewer looking at it.



Greg Galer

Architectural Forms
Study, Barcelona 2018

2018
Photograph
12" x 15"

Starting Bid: \$80

Item #50

Gaudi's famed Park Güell in Barcelona is full of creative design, but some innovative geometric and structural forms are only visible during restoration efforts. The drainage and structural system above Hypostyle Hall are normally covered with sand to form Nature Square, and invisible.



Rachel Martin

Fenway Park

Framed photograph
17" x 20"

Starting Bid: \$90

Item #51

Rachel Martin is a formally-trained photographer from Boston, Massachusetts with experience in documentary and fine art photography.

Framed and ready to hang.



Steven Rosenthal

South Effingham NH
Union Church Built in
1891

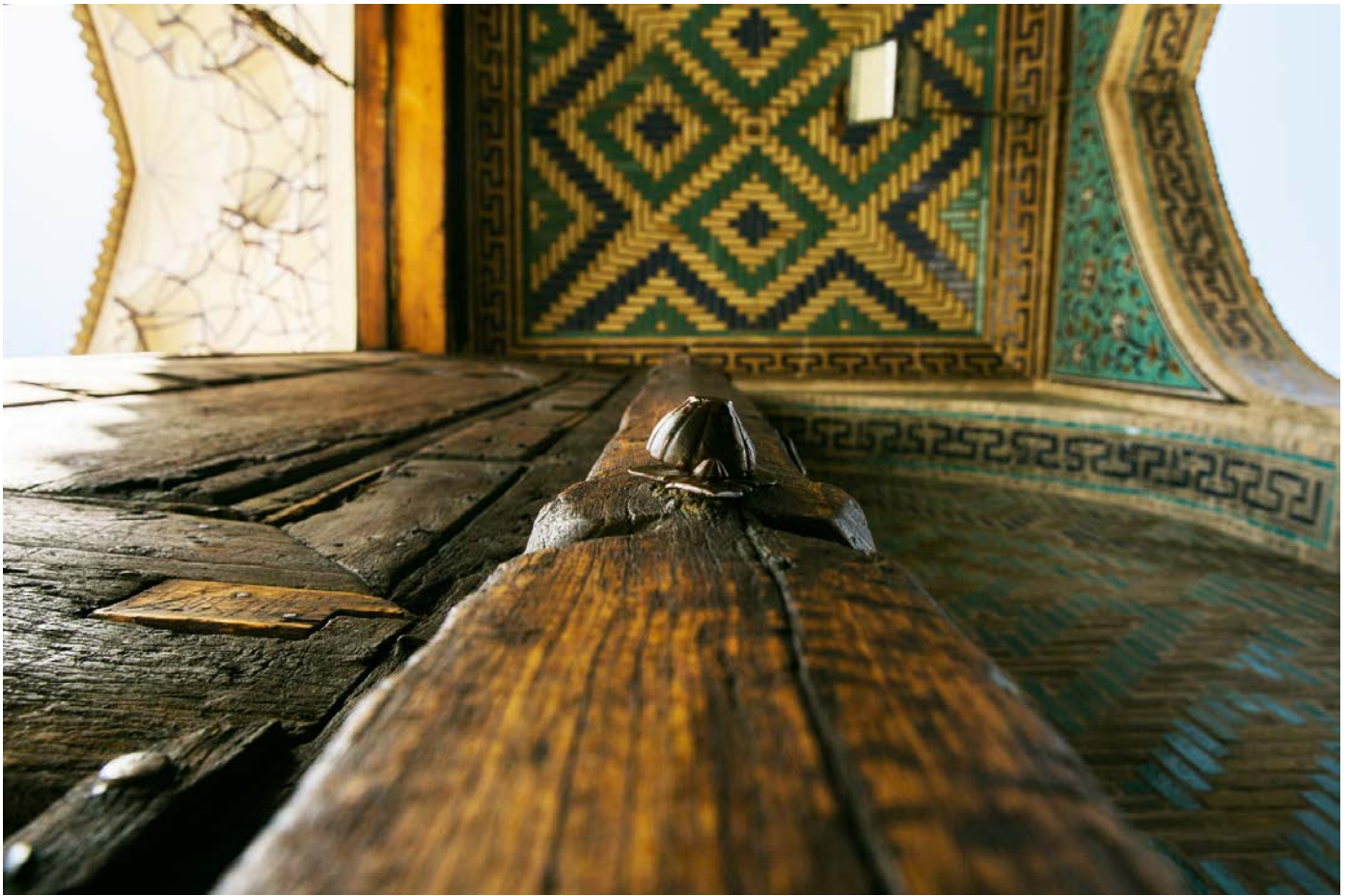
2003
Photograph
11" x 14" archival print 16" x
20" matte

Starting Bid: \$240

Item #52

Steve Rosenthal began his photography career while working as an architect in Cambridge, Massachusetts in the late 1960s. Not long afterward, he turned to architectural photography as a full time career and very quickly established himself at the top of the field in New England. Working primarily for the design professions, his images have been widely published in the U.S. and abroad. He is the recipient of prestigious national awards from both the photography and architectural professions.

His 45-year personal photography project of travels throughout New England culminated in the publication by The Monacelli Press of a magnificent large format book, *White on White: Churches of Rural New England*. Forty large prints from the book comprise a traveling exhibition sponsored by Historic New England. He is also co-author of 5 children's books on architecture.



Setareh Tajbakhsh

Gateway

2018

Photograph

24" x 20" framed

Starting Bid: \$200

Item #53

Artist Statement:

I was born in Isfahan, a city known for its magnificent art and architecture. Troubled that my beautiful ancient land soon will be consumed by war and forgotten in clouds of dust and rubble, as it is was done in Syria, I traveled back to my hometown Isfahan, Shiraz, and Yazd, to bring with me scenes from an ever-changing society.



Shel Bachus

Skylight

2018
Photograph
20" x 16" framed

Starting Bid: \$100

Item #54

Artist Statement:

These photographs were taken as part of a weekend photography project in which I wanted to document the aesthetics of urban design inhering in San Francisco's newly developed South of Market Area (SOMA). The photographs submitted here were taken on August 19, 2018 from the public rooftop park of SOMA's then newly completed Salesforce Transit Center. Unfortunately, the Salesforce Transit Center is currently closed for repairs to remedy recently discovered structural problems. Nonetheless, the Center's rooftop park provided an excellent platform to photograph SOMA's emerging urban environment.



Eric Newman

Pedestrian Bridge

2018
Photograph
18" x 24"

Starting Bid: \$70

Item #55

Artist Statement:

Photography is an interesting medium in the sense that it can capture the way that I see and perceive fleeting thoughts and forms, and in turn, hopefully allows the viewer to see and possibly think the way that I did at the time of exposure. This medium has the potential to hopefully give an insight to how each and every one of us has hundreds of interesting images passing by us every day, we just need to pause and perceive them.



Matthew Dickey

Probably Lost in City Hall

Photograph
11" x 14"

Starting Bid: \$100

Item #56

Matthew grew up outside of St. Louis. His interest in architecture and art started at a young age when he would draw elaborate dwellings in his small sketch pad.

He is often spotted around Boston with his camera and bicycle in tow, getting lost on two wheels and photographing the architecture. Matthew has a BFA in painting from Southern Illinois University, Edwardsville and a MS in Arts Administration from Boston University. He is a digital marketer and traveler and lives in Boston.

Probably Lost in City Hall was taken before the recent renovations began at City Hall Plaza in Boston.

Experiences



Lucozzi Portraits

In-Studio Senior Portrait Session

Experience

Starting Bid: \$120

Item #57

At Lucozzi Portraits, we believe that when your family is your art, your art is priceless. We are a custom portrait art studio specializing in finished and framed wall portraiture. Let us tell your story of today, forever.

Value:

\$300 In-Studio Senior Portrait Session (\$125 Session fee, One file emailed directly to yearbook and a \$175 product credit.)



Lucozzi Portraits

In-Studio Family Portrait Session

Experience

Starting Bid: \$200

Item #58

At Lucozzi Portraits, we believe that when your family is your art, your art is priceless. We are a custom portrait art studio specializing in finished and framed wall portraiture. Let us tell your story of today, forever.

Value:

\$500 In-Studio Family Portrait Certificate
(Includes portrait consultation, \$250 in-studio
session fee and \$250 product credit.)