

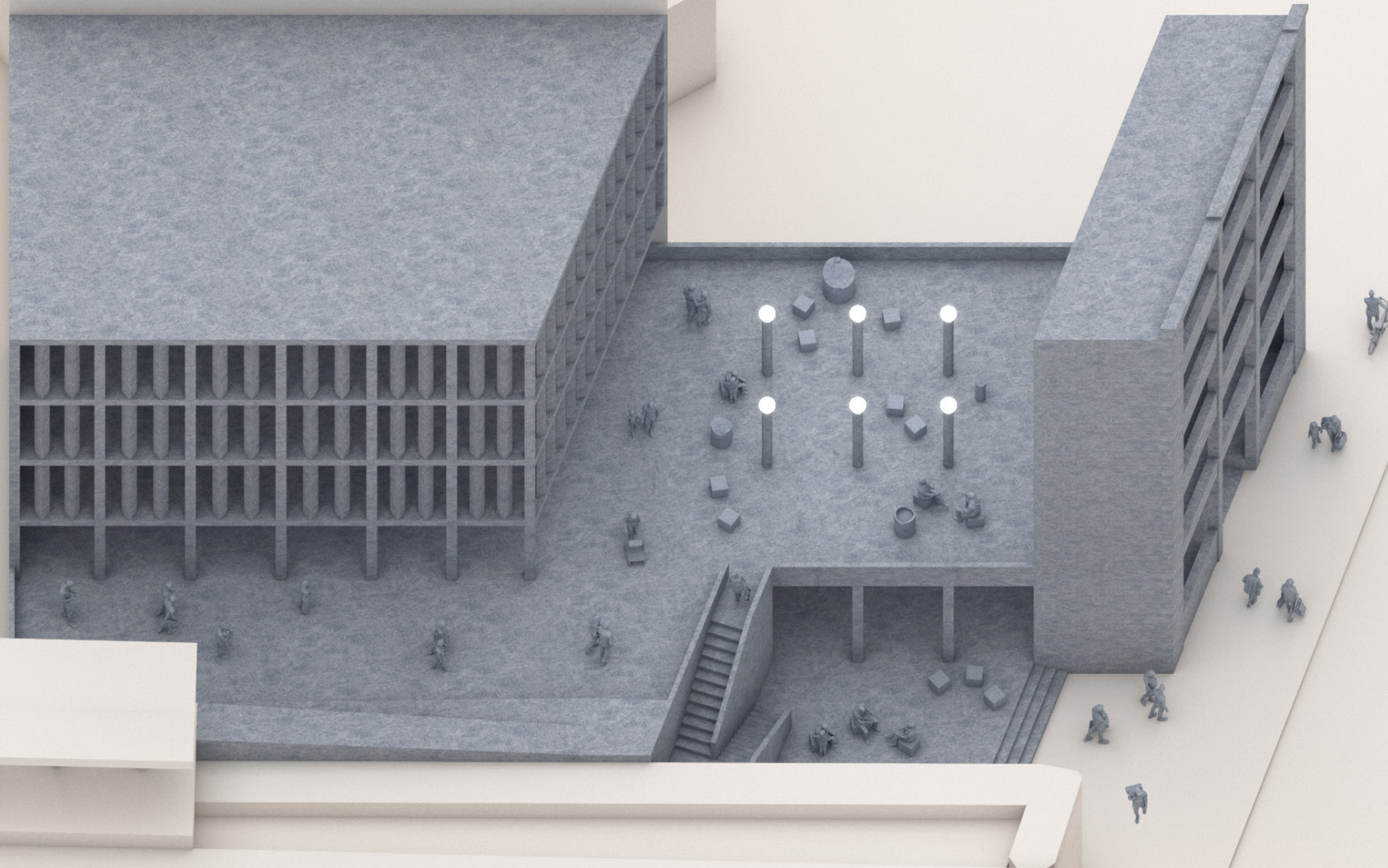
1 Billboard, 1 Plaza, 72 Columns

“...society has become an increasingly complex network of interlocking carbon forms, each of which replicates the myth of a limitless supply of energy and resources that is characteristic of a carbon-fueled culture of abundance.”

- Elisa Iturbe, “Architecture and the Death of Carbon Modernity”

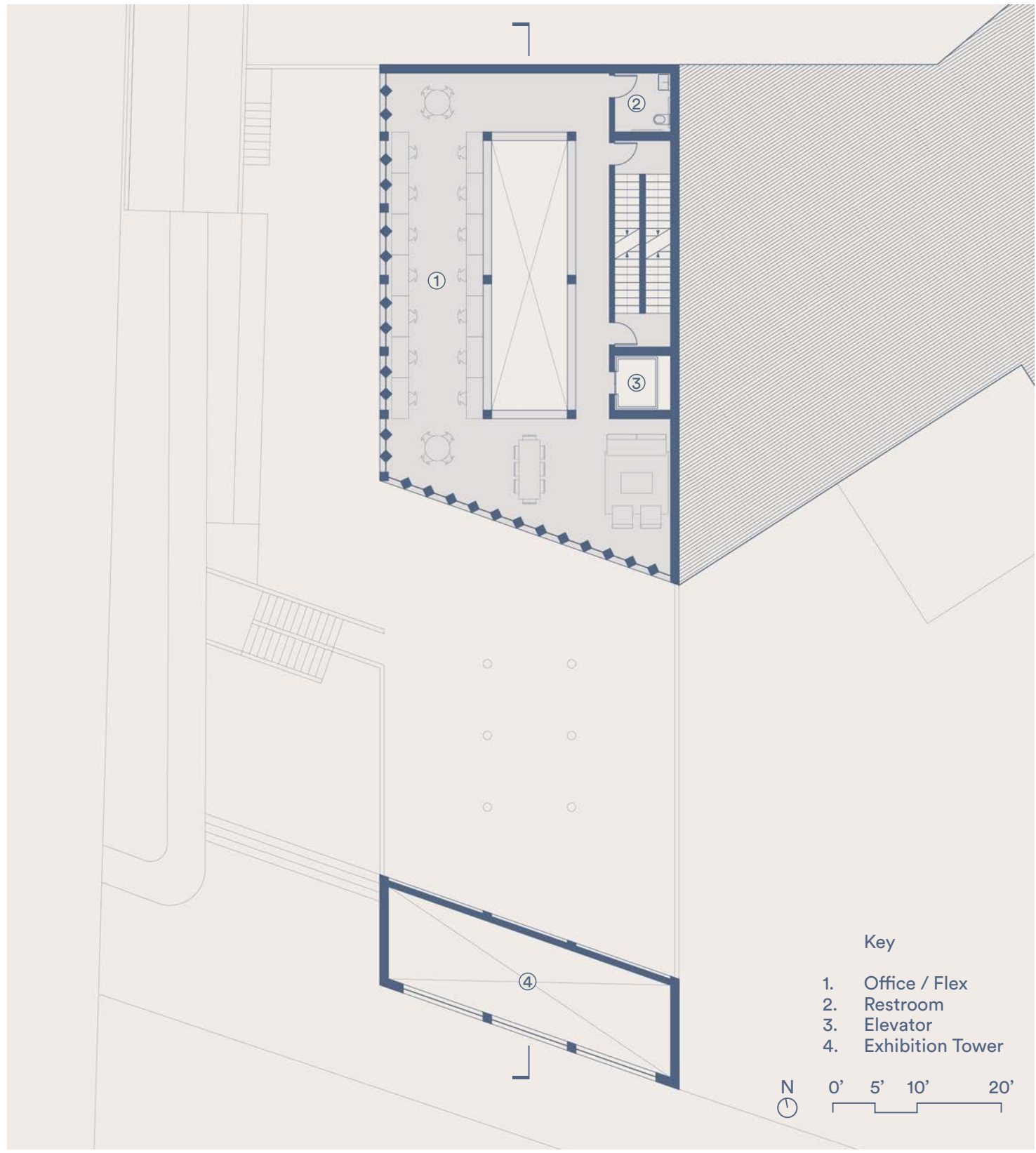
Concrete exemplifies many of architecture’s worst habits. It is associated with remarkably high energy and carbon loads, and is often cast in a style that appeals to few non-architects. The invitation to adaptively reuse a former industrial building that is constructed entirely out of concrete comes with a certain responsibility to intelligently consume its own material and to simultaneously reconsider its image.

This project transforms the former Dorchester Fireproof Storage Building into a vibrant, mixed-use development by removing a portion of the existing structure to introduce a public plaza and to open views to Upham’s Corner. Like Rachel Whiteread’s plaster casts, the facade stands like a billboard, commemorating its past and allowing for new futures by transforming it into a quadruple-height rotating exhibition space visible from the street, and a projection surface to be viewed from the plaza. The 72 columns removed from the buildings interior are re-purposed as a new facade that wraps around three stories of flexible office space, indexing their reuse through a 45-degree rotation and tangential alignment to the slab-edge. The remaining concrete is used as fill material to form a bridge to the train platform, and as abstract sculpture and plaza seating for the public to enjoy.

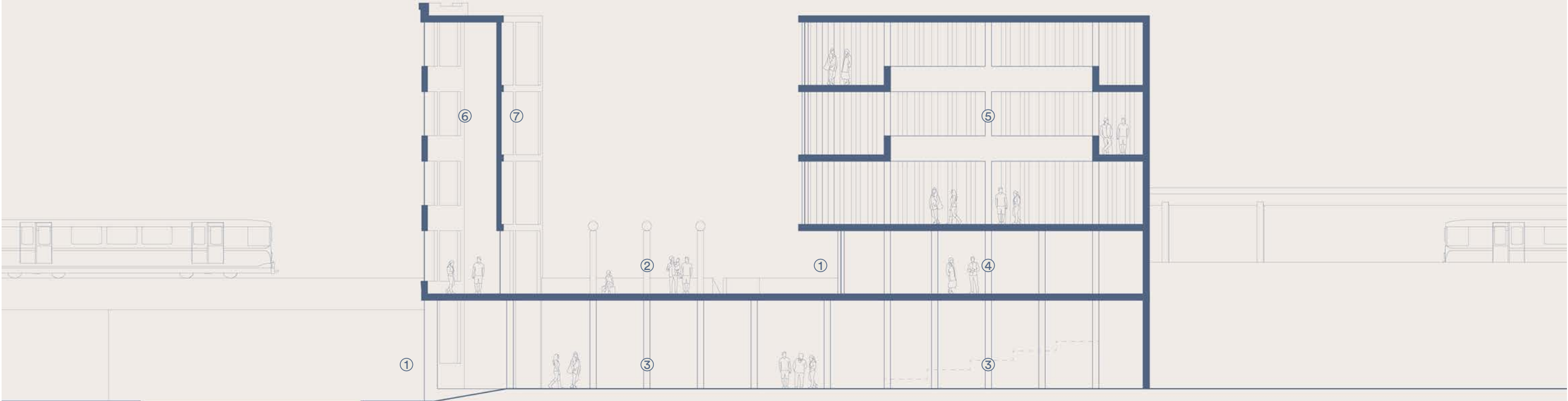




Plaza Level



Typical Office Level



- Key
- 1. Entry
 - 2. Public Plaza
 - 3. Community/Flex
 - 4. Retail
 - 5. Office
 - 6. Exhibition Tower
 - 7. Projection



Section



Interior Perspective