

CULTURE STILTS

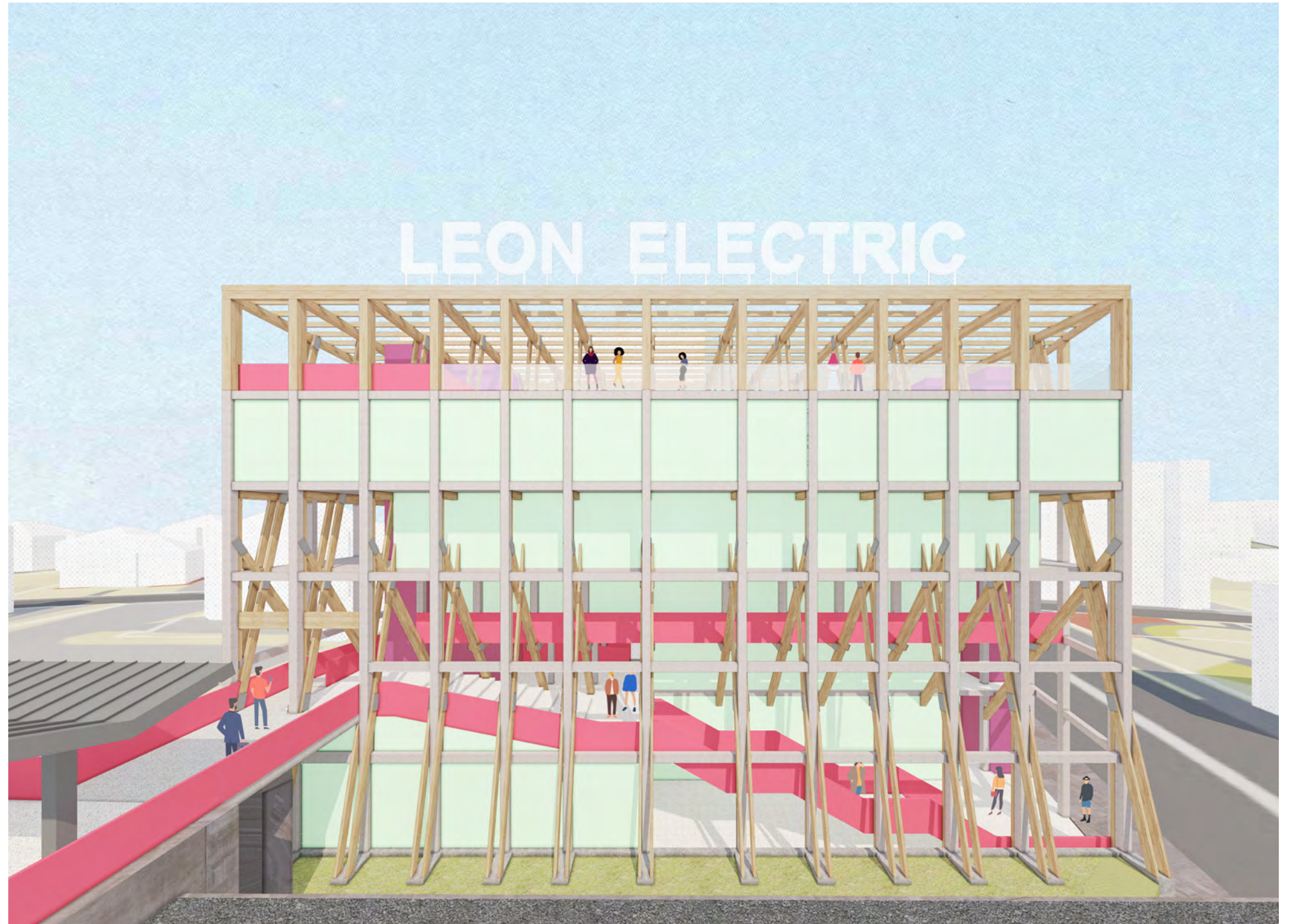
The three-dimensional concrete framework of Leon Electric building stands as a testament to its former industrial use and functionality, and is what has been ingrained into the collective “**memory**” of the community. The premise of the new development, therefore, shall lie in preserving and celebrating the existing framework and materiality while pursuing sustainable development and creating a public interface.

The architectural operation for “**continuance**” begins by carving out pocket spaces from the existing mass to create a new public passage. This void serves as a “**gateway**” that connects the platform and street level, providing ample public space. While strictly preserving the external shell of the concrete framework, selective demolition of interior columns and slab is carried out, and new heavy timber frames, exhibiting a stark contrast from the building’s existing materiality, are introduced to create a new “**stilt**” system. It is a physical manifestation of society’s shift in values from prioritizing “maximum functionality” to “sustainable development”, and a symbolic “stilt” that upholds the new public function.



Within the new gateway are the new web of public passages, which connects the platform, building, and the street. The new passage overcomes the level differences via architectural devices - stair, ramp, and two new elevator cores. Various cultural programs are scattered along the passage, including a theater stage, mini-libraries, and social services for community residents.

Finally, a new signage “Leon Electric” is added atop the Culture Stilts, in honor of its legacy, symbolically carrying its lineage and boldly announcing its rebirth to the commuters.

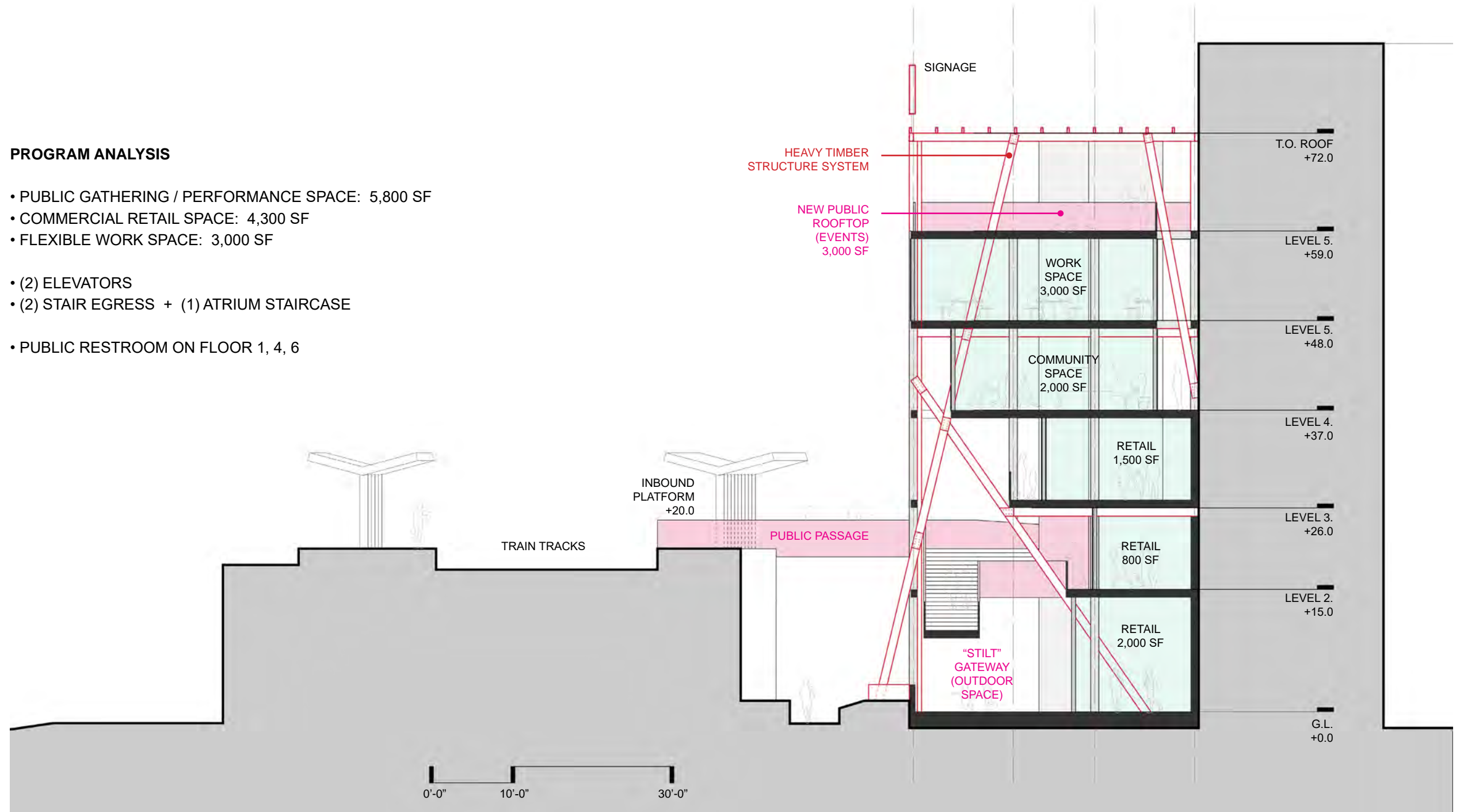


SECTION

(SHORT)

PROGRAM ANALYSIS

- PUBLIC GATHERING / PERFORMANCE SPACE: 5,800 SF
- COMMERCIAL RETAIL SPACE: 4,300 SF
- FLEXIBLE WORK SPACE: 3,000 SF
- (2) ELEVATORS
- (2) STAIR EGRESS + (1) ATRIUM STAIRCASE
- PUBLIC RESTROOM ON FLOOR 1, 4, 6



PLAN
(2ND FLOOR)

