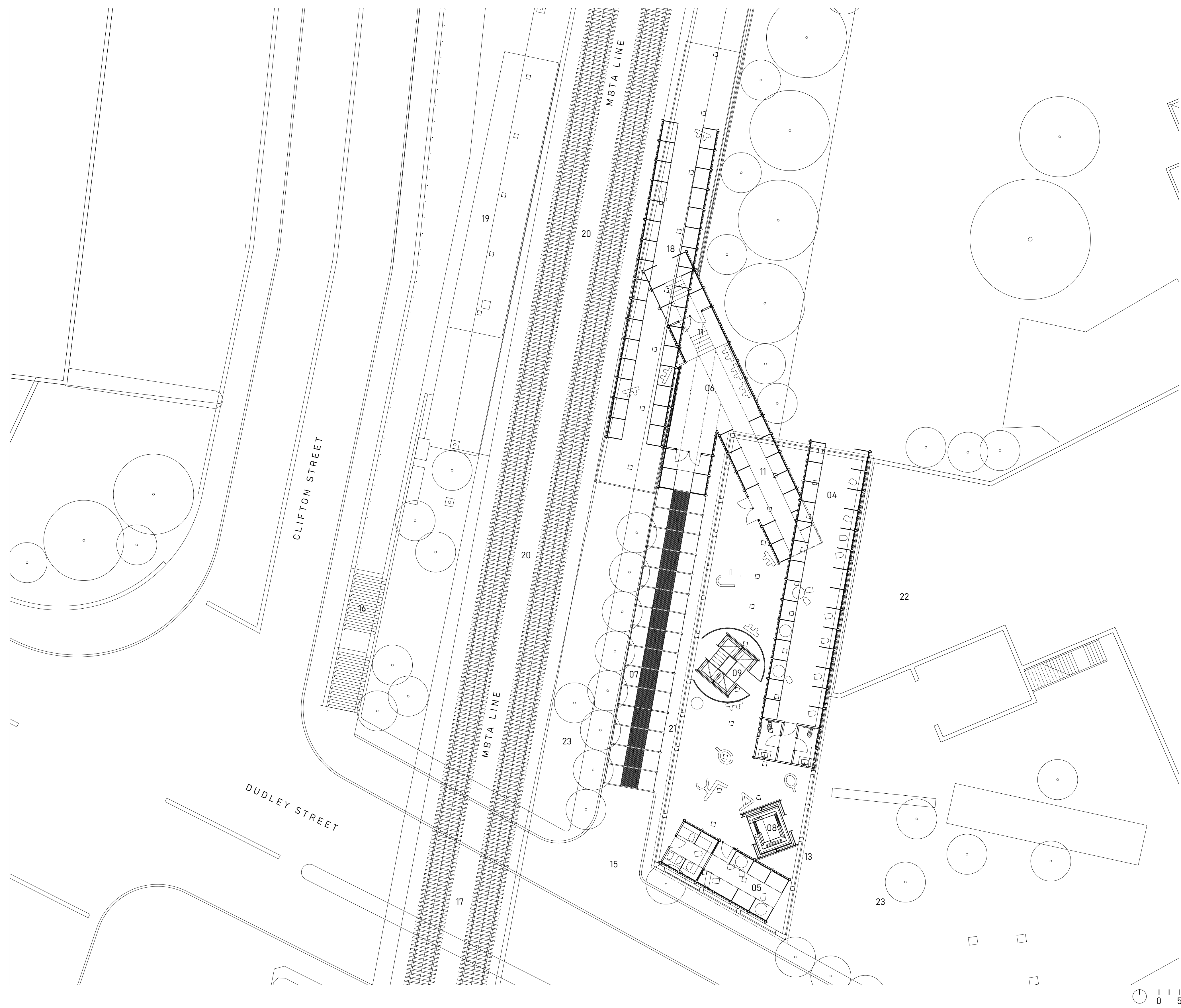




INTERIOR RENDER: COMMUNITY SPACE



PROJECT SUMMARY:

"..Perhaps the observation of things has remained my most important formal education; for observation later becomes transformed into memory. I see all the things I have observed arranged like a catalogue... (that) reappears in several objects and constitutes their deformation and, in some way, their evolution."

- Aldo Rossi, A Scientific Autobiography

In a building of memory and continuance, the observation and collection of found artifacts precedes the process of generating form. Rather than constructing from scratch, found artifacts are transformed into a family of mnemonic corridors, weaving through the unaltered skeleton of the existing building.

These corridors are constructed of familiar yet distant parts: local: preserved steel components of the size and scale of the ubiquitous Boston street underpass; nostalgic: industrial components of Boston's rich history of transit infrastructure; pragmatic: 2x6 studs, 1x ribs, and glu-lam beams. Together, the individual elements are bound together into a cohesive yet playful spine.

The line between exterior and interior is blurred as two distinct worlds form a productive opposition in the narrative of the proposal:

First, the corridor, constructed of found artifacts and framing the new intervention. These corridors are multifunctional: a ramp leads visitors from Dudley street to a collective vestibule; a passage links the Leon Electric site and the Upham's Corner inbound platform; vertical circulation cores, linear offices and private restrooms complete the system.

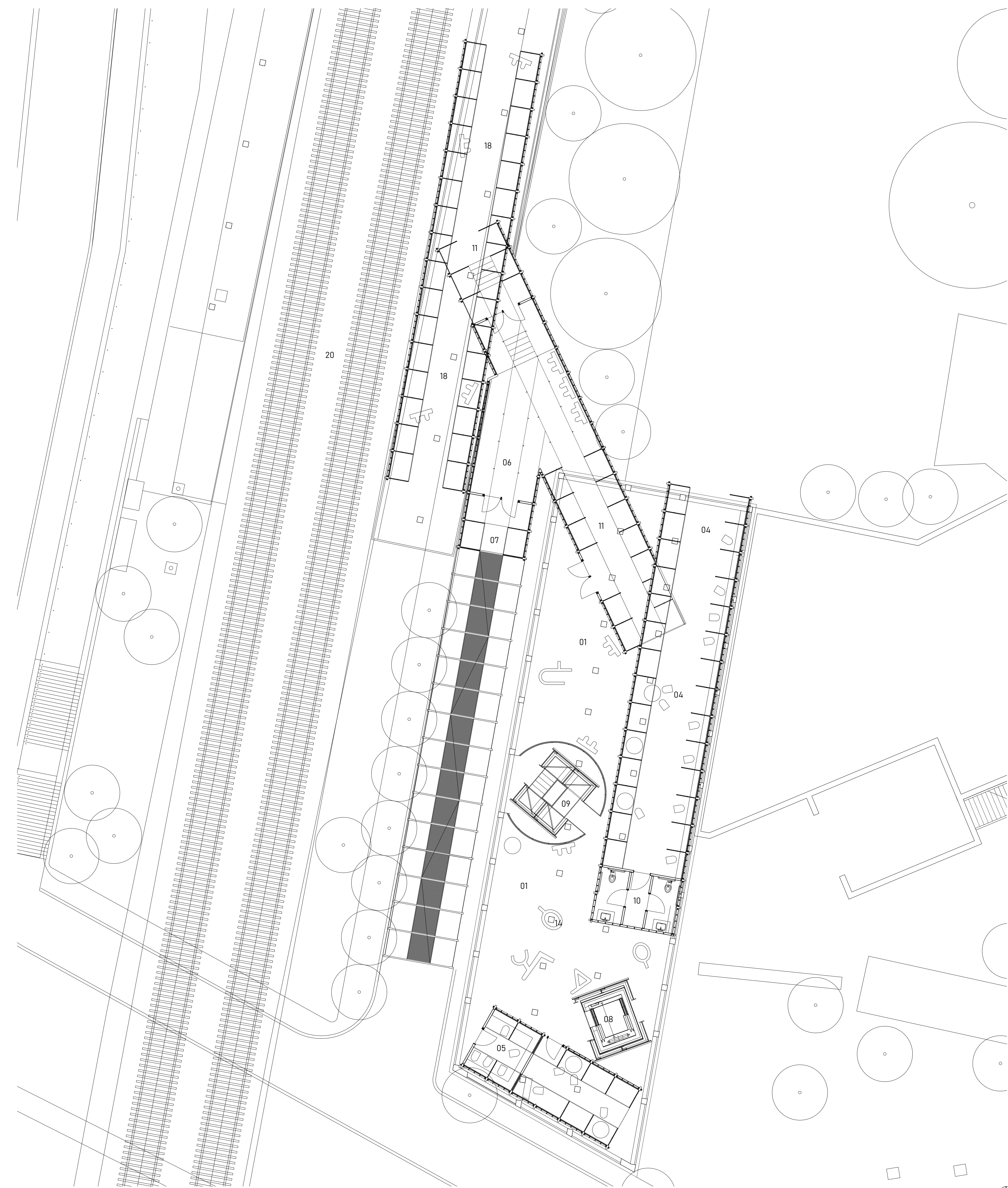
Second, the existing building structure is largely preserved and wrapped in a thin screen. The structure as found is left to remain, its function to host flexible community gathering, performance and retail spaces.

Constructed of the 'stuff' of remembrance, *Observation, Memory, Corridor* aims to revitalize Uphams Corner through fusing the remembered and the familiar into a cohesive whole.

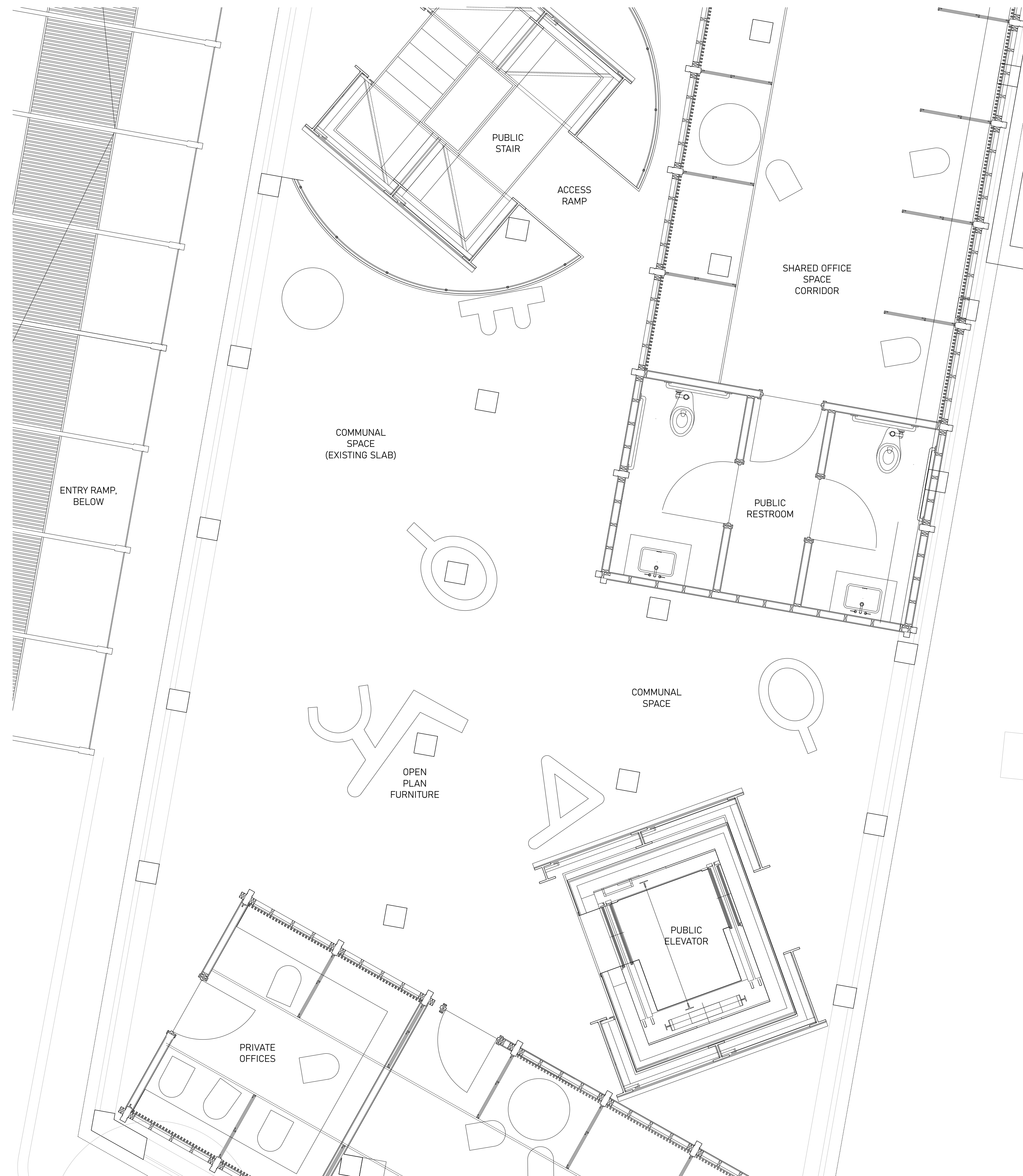
PLAN KEY:

- | | |
|---|------------------------------------|
| 01 FLEXIBLE COMMUNITY SPACE | 15 ENTRY PLAZA |
| 02 PERFORMANCE SPACE | 16 EXTERIOR STAIR |
| 03 COMMERCIAL RETAIL SPACE | 17 EXISTING UNDERPASS |
| 04 COMMUNITY WORK SPACE | 18 INBOUND PLATFORM |
| 05 PRIVATE OFFICE SPACE | 19 OUTBOUND PLATFORM |
| 06 PUBLIC ENTRY VESTIBULE | 20 UPHAM'S CORNER / MBTA LINE |
| 07 ENTRY RAMP | 21 EXISTING ROCK LEDGE |
| 08 ELEVATOR | 22 EXISTING LEON ELECTRIC BUILDING |
| 09 PUBLIC STAIR | 23 PROPOSED PLANTING |
| 10 PUBLIC RESTROOM | |
| 11 CIRCULATION CORRIDOR | |
| 12 PUBLIC ENTRY VESTIBULE | |
| 13 ENVELOPE: WINDOW WALL AND RAINSCREEN | |
| 14 EXISTING COLUMN TO REMAIN | |

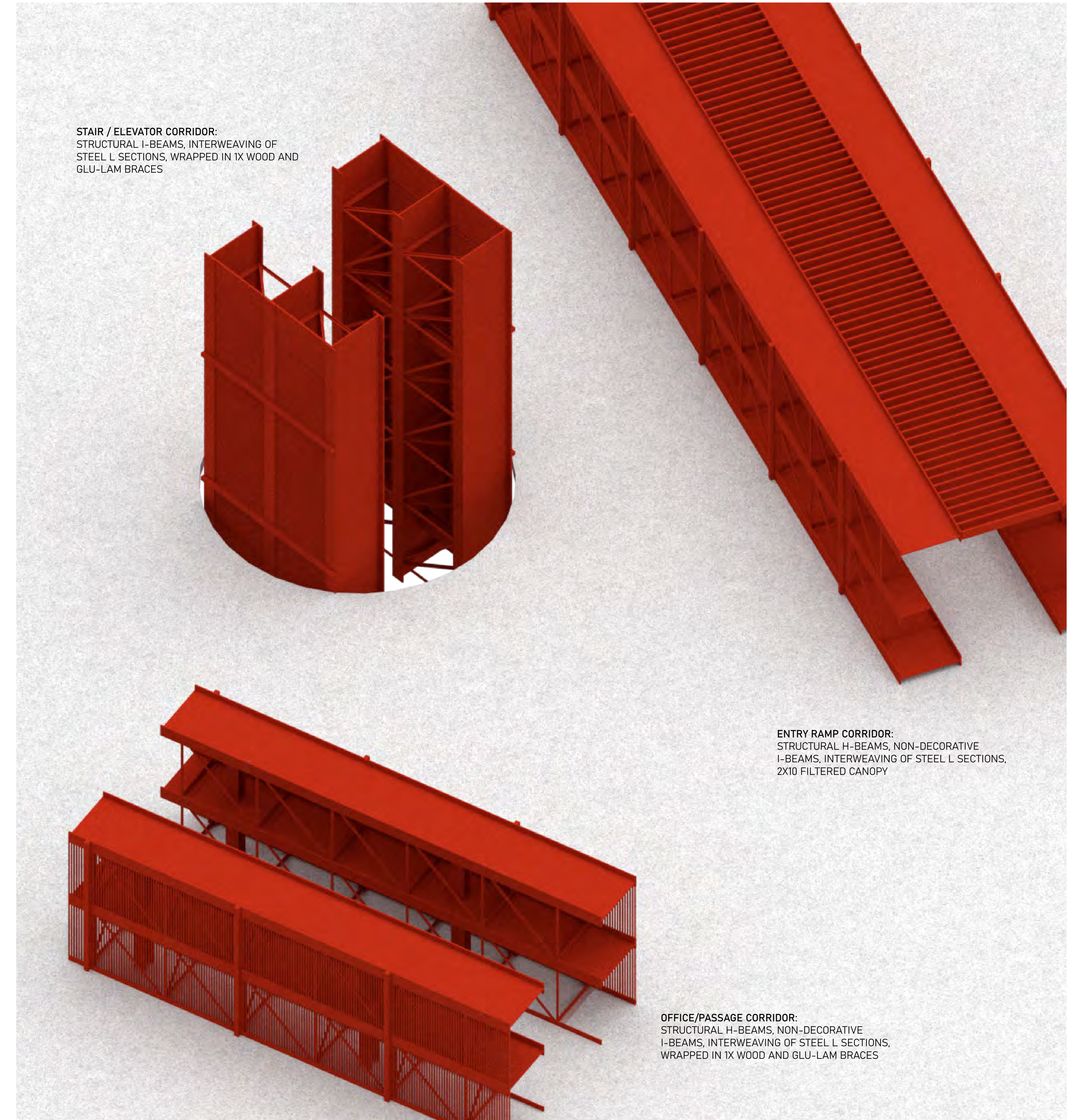
SITE PLAN



L02 PLATFORM PLAN



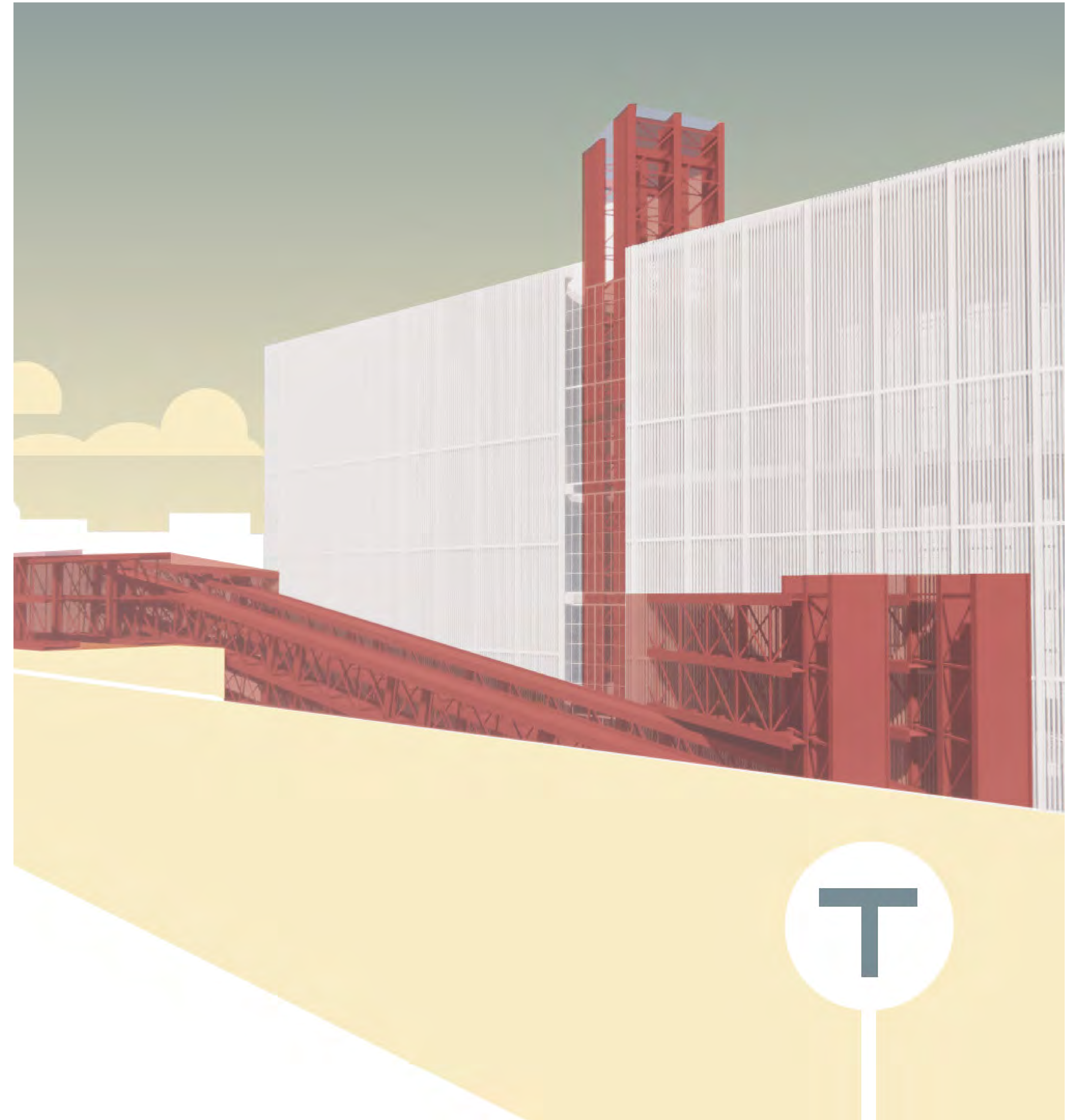
DETAIL PLAN



ARTIFACT/CORRIDOR FAMILY



SECTION



EXTERIOR RENDER