

# A RIBBON + A ROOF

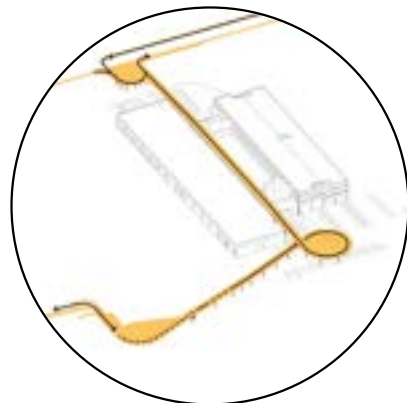
DIVERTING, IMPROVING, AND  
INSTIGATING URBAN FLOWS  
FOR PUBLIC BENEFIT

The efforts of the Boston Public Works Department, and the very definition of urban infrastructure more generally, can largely be understood as the management of material and social movements. Roads and sidewalks are cleaned, paved, and lit for smooth and safe movement of cars and pedestrians. Trash and recycling are separated for proper processing. Water is diverted to storm sewer systems to mitigate flooding. This proposal considers architecture through the lens of resource flows when considering how to intervene upon and improve the BPW site.

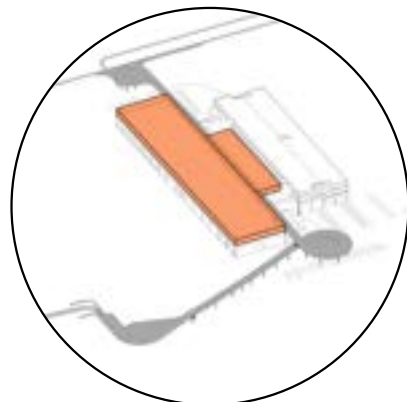
A continuous sloped path dubbed "The Ribbon" connects the two sides of the site together, cutting directly across the building's roof to make the site available for public inhabitation and movement. The proposal also takes advantage of the BPW facility's massive rooftop, imagining it as a small city within the city that can host a wide breadth of activities and change over time with its communities. The architectural approach to the rooftop is infrastructural, attempting to provide frameworks for inhabitation and change over time. Rather than a simple blank slate, the new frame structure provides different zones that provide a range of qualities so that there might be something for everyone.

As an island of urban functions, it is both autonomous from the existing networks of Boston, and open to new possibilities, and also engaged with and open to the forces surrounding it. Rain water is captured, stored, and filtered for public enjoyment. Waste is reclaimed and dignified for use as the building's screen. Social services, food vendors, artists, activists, and above all, workers, are able to enjoy the BPW site, placing the dual roles of work and play in conversation with one another.

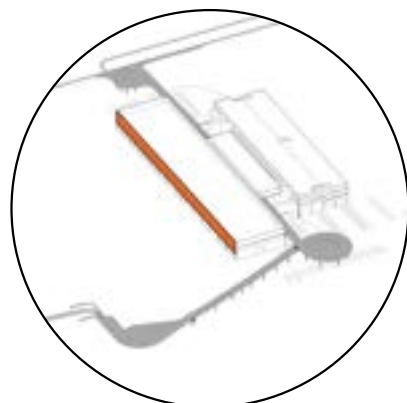
TRENT FREDRICKSON



RIBBON: A SLOPED PATH BRINGS THE PUBLIC THROUGH THE BPW SITE



ROOF: A FRAME STRUCTURE IS ADDED TO THE ON TOP OF THE EXISTING BUILDING TO HOST A VARIETY OF PUBLIC USES

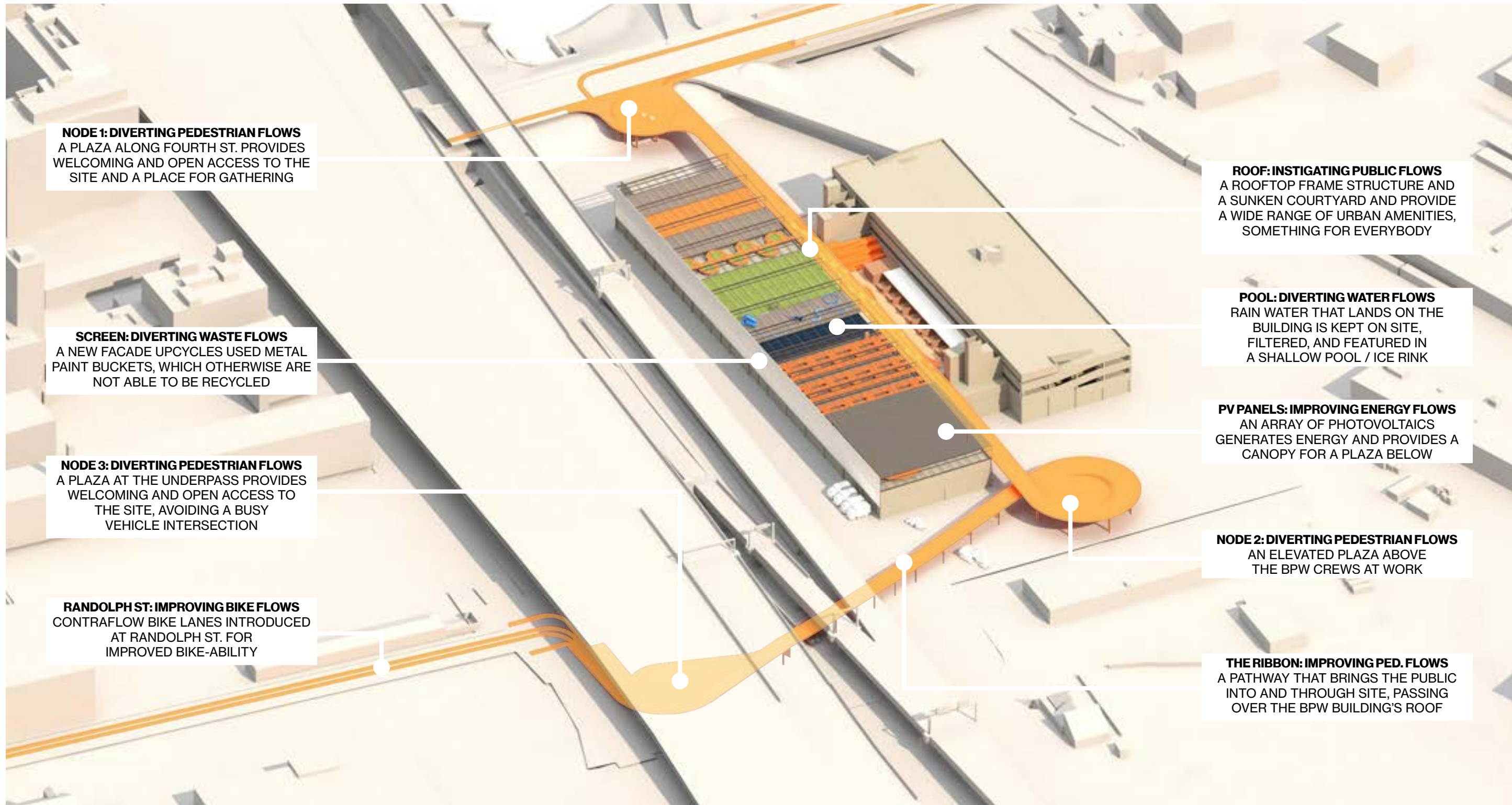


SCREEN: A FACADE OF RECLAIMED PAINT BUCKETS PROVIDE A SCREEN FOR THE ROOF AND A NEW CIVIC IMAGE FOR THE BPW SITE



A RIBBON + A ROOF

ROTC FINAL COMPETITION 2024



**NODE 1: DIVERTING PEDESTRIAN FLOWS**  
A PLAZA ALONG FOURTH ST. PROVIDES WELCOMING AND OPEN ACCESS TO THE SITE AND A PLACE FOR GATHERING

**SCREEN: DIVERTING WASTE FLOWS**  
A NEW FACADE UPCYCLES USED METAL PAINT BUCKETS, WHICH OTHERWISE ARE NOT ABLE TO BE RECYCLED

**NODE 3: DIVERTING PEDESTRIAN FLOWS**  
A PLAZA AT THE UNDERPASS PROVIDES WELCOMING AND OPEN ACCESS TO THE SITE, AVOIDING A BUSY VEHICLE INTERSECTION

**RANDOLPH ST: IMPROVING BIKE FLOWS**  
CONTRAFLOW BIKE LANES INTRODUCED AT RANDOLPH ST. FOR IMPROVED BIKE-ABILITY

**ROOF: INSTIGATING PUBLIC FLOWS**  
A ROOFTOP FRAME STRUCTURE AND A SUNKEN COURTYARD AND PROVIDE A WIDE RANGE OF URBAN AMENITIES, SOMETHING FOR EVERYBODY

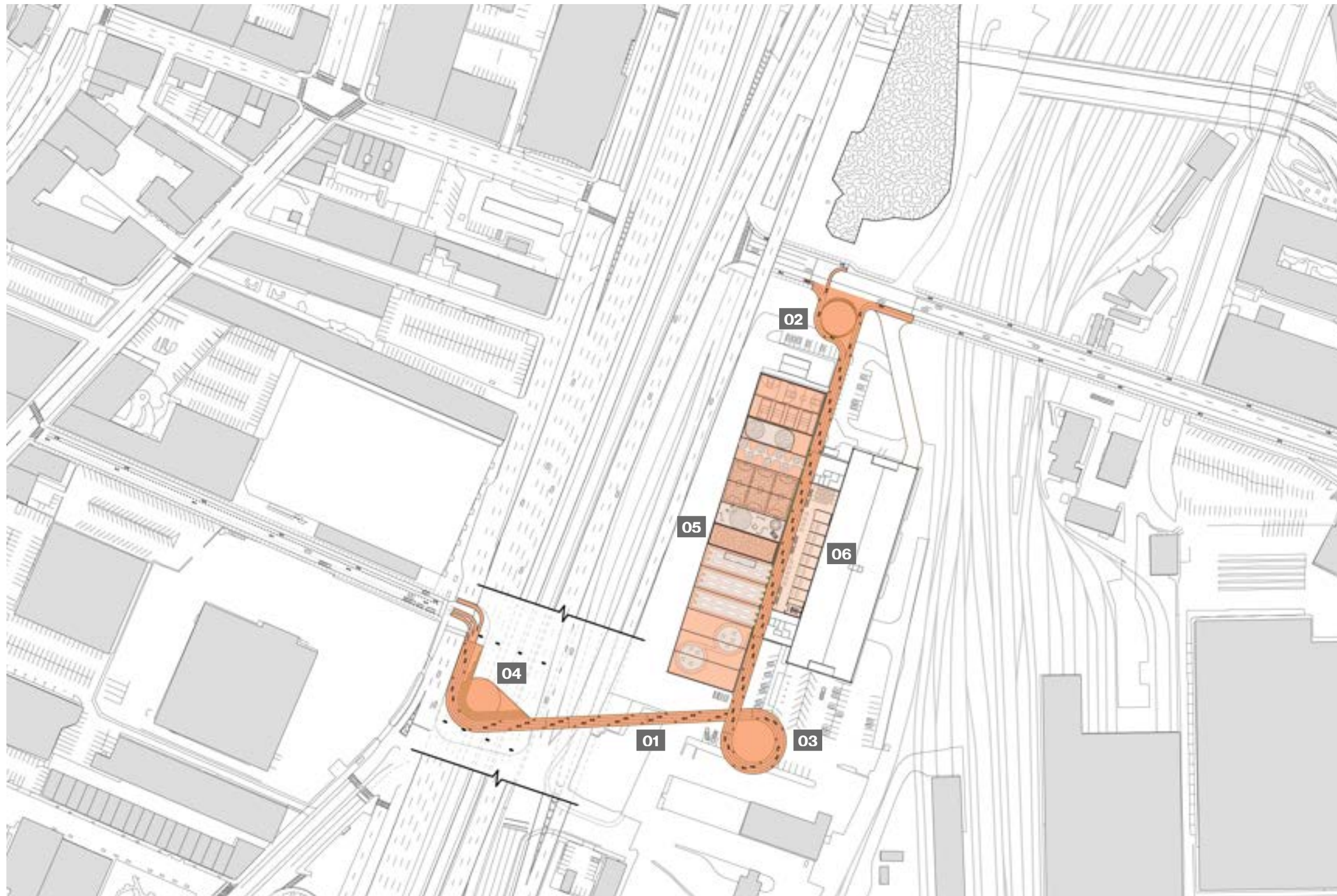
**POOL: DIVERTING WATER FLOWS**  
RAIN WATER THAT LANDS ON THE BUILDING IS KEPT ON SITE, FILTERED, AND FEATURED IN A SHALLOW POOL / ICE RINK

**PV PANELS: IMPROVING ENERGY FLOWS**  
AN ARRAY OF PHOTOVOLTAICS GENERATES ENERGY AND PROVIDES A CANOPY FOR A PLAZA BELOW

**NODE 2: DIVERTING PEDESTRIAN FLOWS**  
AN ELEVATED PLAZA ABOVE THE BPW CREWS AT WORK

**THE RIBBON: IMPROVING PED. FLOWS**  
A PATHWAY THAT BRINGS THE PUBLIC INTO AND THROUGH SITE, PASSING OVER THE BPW BUILDING'S ROOF

## SITE PLAN



### PLANKEY

- 01. Sloped Path**

The Ribbon rises at a 1:20 incline to provide a comfortable journey through the site for all individuals and their different forms of movement. 5' bands are established to distinguish zones for walking vs biking.
- 02. Node 1: Fourth St. Plaza**

A circular termination of the Ribbon establishes a welcoming and open connection between the site and Fourth St. and other pedestrian paths to the north. Space is available for gathering, relaxing, playing music, and food trucks.
- 03. Node 2: The Crossover**

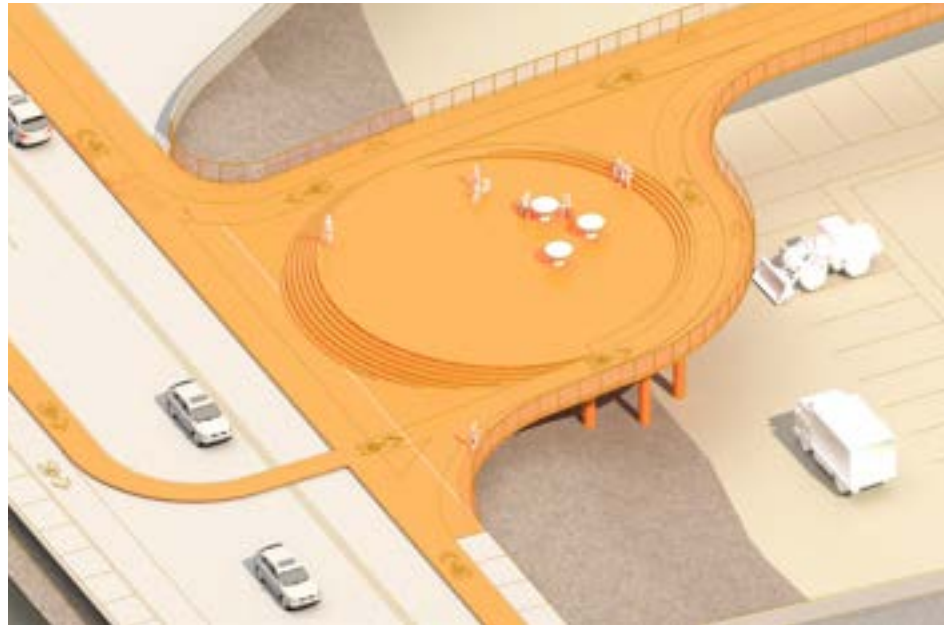
A spiral within the ramp creates a space to pause, relax, and view the BPW crews at work below.
- 04. Node 3: The Underpass**

The Ribbon's slope begins below the freeway to allow pedestrians and bikers to cross the various lanes of traffic in the air, providing a safe entry to the BPW site. The path's form encircles a plaza beneath the freeway to allow for public functions: seating, food trucks, music.
- 05. Rooftop**

The large roof is separated into zones by a new steel-frame structure anchored to the concrete walls below. The design can be understood as infrastructure, providing the framework for flexible, changing, and community motivated activities. The framework is designed to give each zone different qualities relative to shade, openness, floor material, etc.
- 06. Sunken Courtyard / Market**

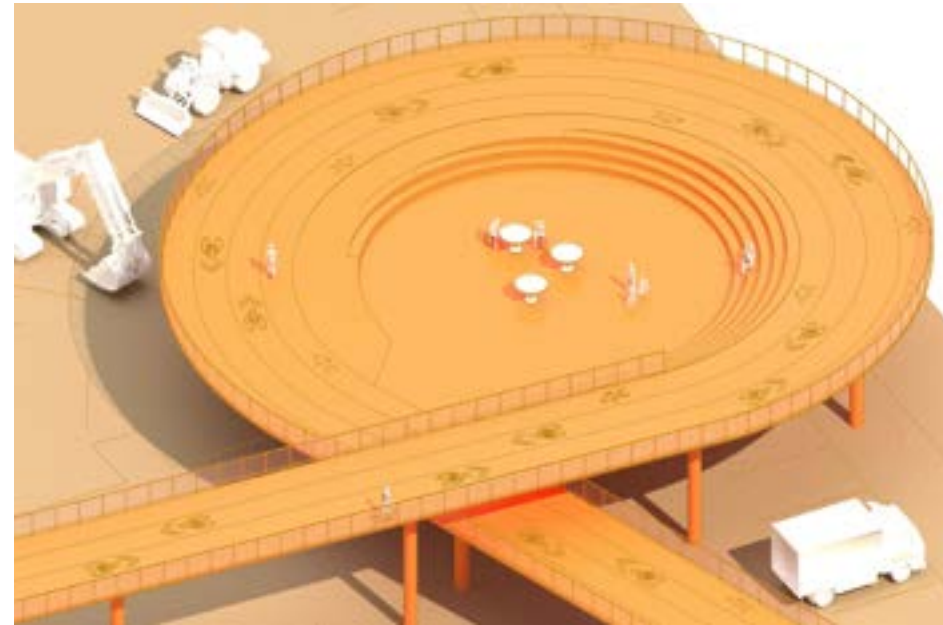
The center roof of the BPW facility is repurposed as a sunken courtyard that with market stalls. The space engages the adjacent buildings: toward the west, new windows provide a view into the working facility, and to the east, the parking garage allows for vehicular access for market vendors.

## THE RIBBON'S THREE NODES



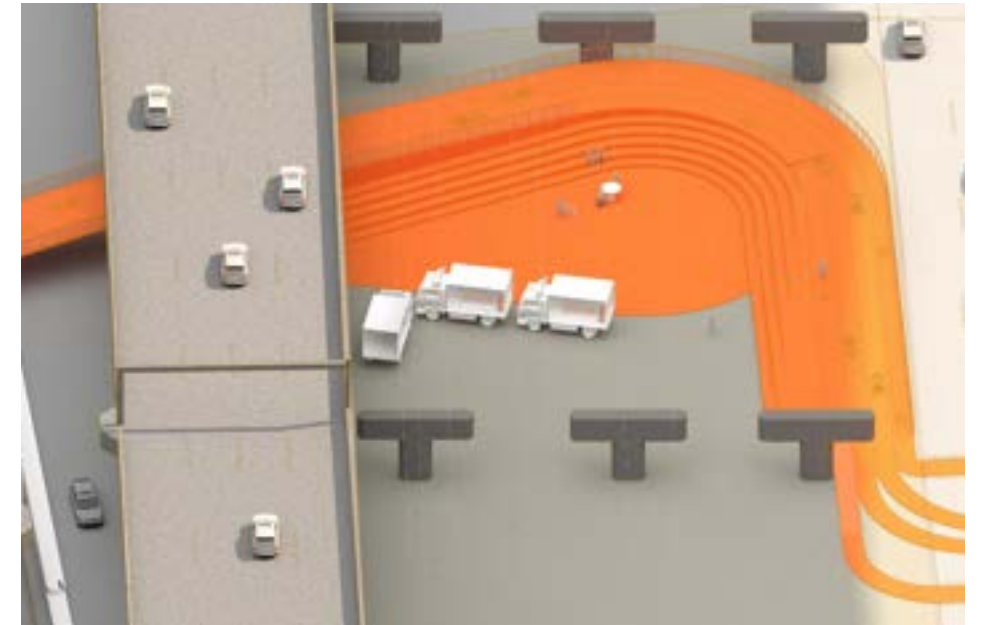
THE FOURTH ST. PLAZA

A circular termination of the Ribbon establishes a welcoming and open connection between the site and Fourth St. and other pedestrian paths to the north. Space is available for gathering, relaxing, playing music, and food trucks.



THE CROSSOVER

A spiral within the ramp creates a space to pause, relax, and view the BPW crews at work below.



THE UNDERPASS

The Ribbon's slope begins below the freeway to allow pedestrians and bikers to cross the various lanes of traffic in the air, providing a safe entry to the BPW site. The path's form encircles a plaza beneath the freeway to allow for public functions: seating, food trucks, music.



**PLANKEY**

- 01. Covered Plaza**  
New space for gathering and relaxing, shaded by an array of photovoltaic panels
- 02. Scaffolding**  
A zone of scaffolding provides a flexible framework for installation of fabric, plywood, fencing, and other readily available membranes. Possible uses include an aviary, community workshops, or space for art display.
- 03. Wading Pool / Ice Rink**  
Captured rain water from the massive roof area (140,860 sqft in total!) is stored, filtered, and circulated through the 9" deep pool, taking pressure off of the municipal storm sewer system.
- 04. Playground**  
A loose arrangement of swings, seesaws, sand pits, and serpentine walls.
- 05. Fields**  
Turf surfaces provide an area for soccer, lacrosse, and other beloved games.
- 06. Gardens**  
Moderately sized soil beds support a range of plants and flowers that change with the season and the people that tend to them.
- 07. Dog Park**
- 08. Hard Surface Courts**  
Pickle-ball, tennis, basketball, four-square.
- 09. Sunken Courtyard**  
A secluded urban room where you can enjoy the site's market and a view into the BPW facility
- 10. Restrooms & Storage**  
Gender-neutral and open year-round
- 11. Market**  
Food vendors, farmers, bike repair, shoe repair, etc. The market backs up to the site's parking garage, providing vehicle access for the vendors
- 12. Social Services Office**  
Publicly staffed to provide support for those that are in need

VIEW FROM THE RIBBON, LOOKING NORTH



VIEW FROM ABOVE THE SUNKEN COURTYARD, LOOKING WEST



VIEW FROM THE SOCCER FIELDS, LOOKING SOUTH

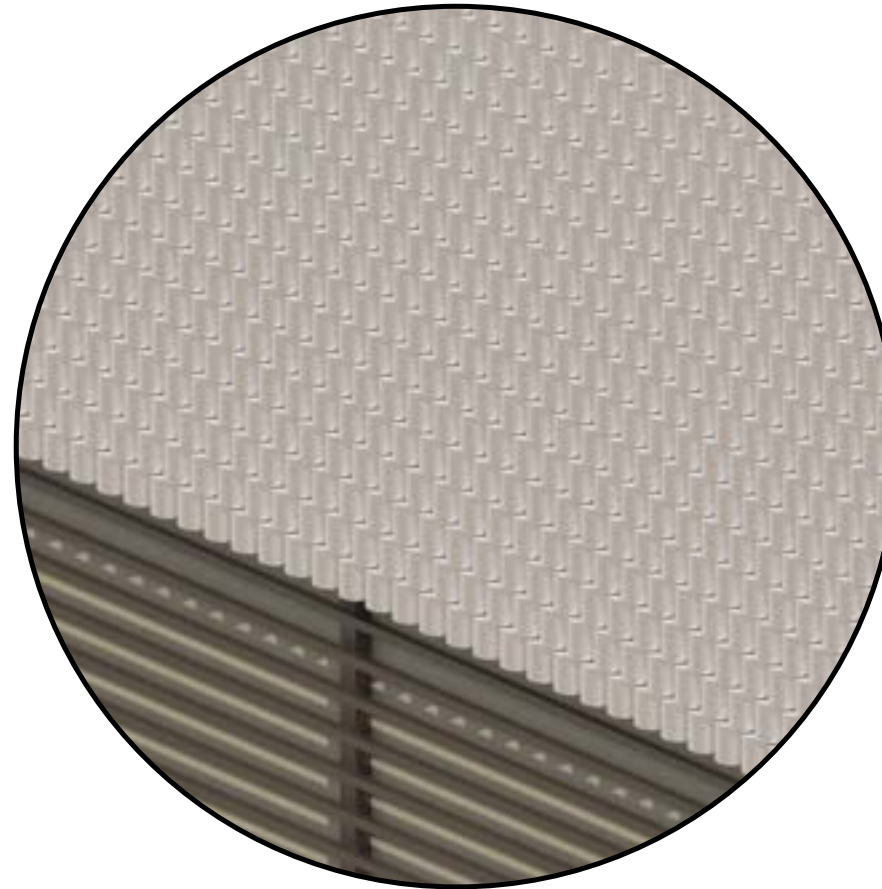






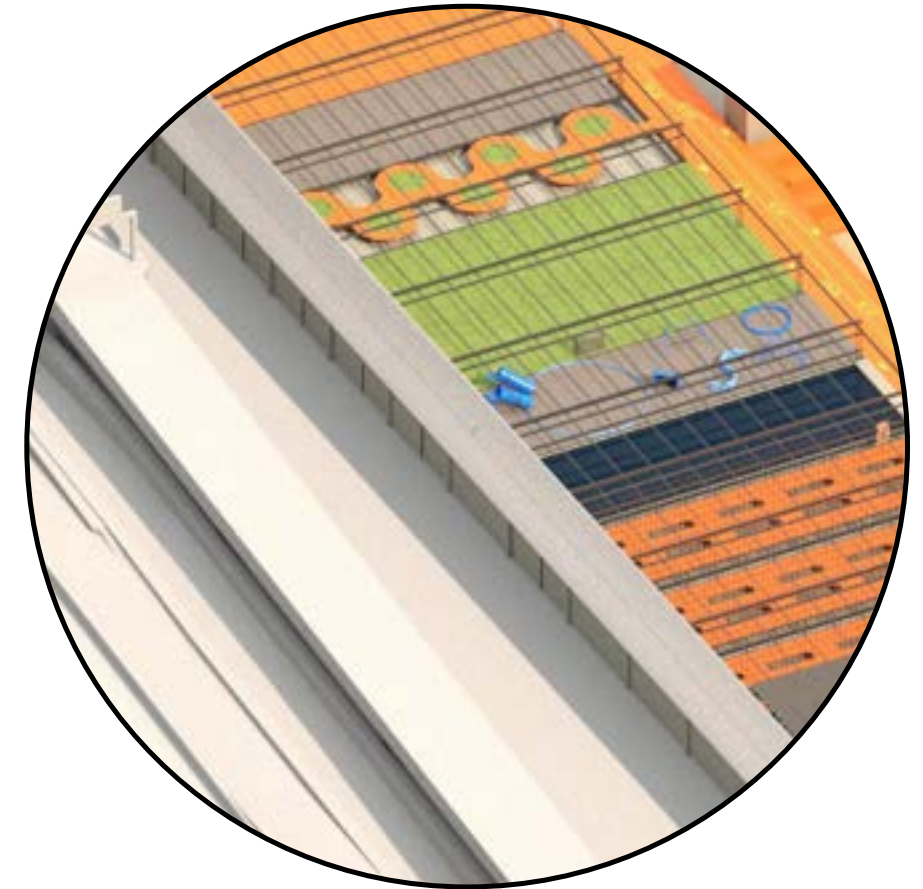
METAL PAINT BUCKETS

Metal paint buckets are not able to be recycled through the City of Boston recycling programs. This project involves an initiative by the BPW to collect used paint buckets that will be repurposed as a screen on the building's western facade. The buckets measure 8" in height and 6-3/4" in diameter. They are made of tin-coated steel, which when undamaged is durable in outdoor conditions.



SCREEN

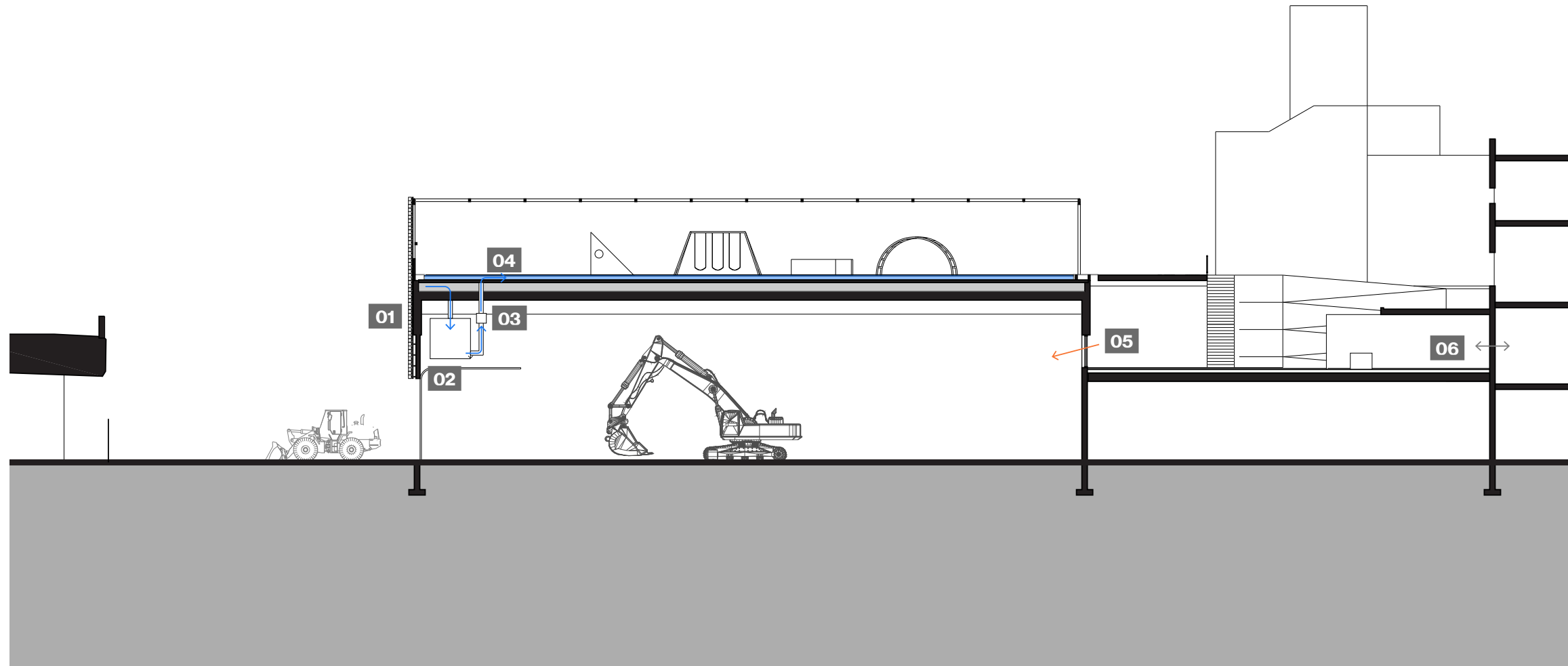
The cylindrical buckets tile together in a staggered pattern, creating a dynamic effect of reflected light and shadow that changes throughout the day.



SCREEN

The screen both provides privacy for the rooftop from the freeway, and also provides an engaging visual effect from the freeway.

# SECTION



## SECTION NOTES

- 01. Paint Bucket Screen**  
The new building screen extends down to the top height of the garage doors, and up to the top of the new rooftop frame structure.
- 02. Rainwater Capture and Drainage**  
Storage under roof in cisterns.
- 03. Filtration**  
Water is filtered to remove debris, but is still non-potable.
- 04. Rooftop Pool / Ice Rink**  
The filtered water is circulated through a shallow pool on the roof.
- 05. Views into the BPW Building**  
New windows provide visual connections from the sunken courtyard and the working spaces of the BPW facility.
- 06. Market Stalls**  
Adjacency with the parking garage allows for vehicle access to load/unload goods and equipment.